

## Product datasheet for **TA306480**

### DHX58 Rabbit Polyclonal Antibody

#### Product data:

Product Type:	Primary Antibodies
Applications:	WB
Recommended Dilution:	WB: 1 - 2 ug/mL
Reactivity:	Human, Mouse, Rat
Host:	Rabbit
Isotype:	IgG
Clonality:	Polyclonal
Immunogen:	LGP2 antibody was raised against a 12 amino acid peptide from near the carboxy terminus of human LGP2.
Formulation:	PBS containing 0.02% sodium azide.
Concentration:	1ug/ul
Purification:	Affinity chromatography purified via peptide column
Conjugation:	Unconjugated
Storage:	Store at -20°C as received.
Stability:	Stable for 12 months from date of receipt.
Gene Name:	DEXH-box helicase 58
Database Link:	<a href="#">NP_077024</a> <a href="#">Entrez Gene 80861 Mouse</a> <a href="#">Entrez Gene 303538 Rat</a> <a href="#">Entrez Gene 79132 Human</a> <a href="#">Q96C10</a>

**Background:** Anti-viral innate immune responses are triggered by pathogen-associated molecular patterns (such as the accumulation of intracellular nucleic acids resulting from virus infections) and represent the first line of defense against numerous infectious organisms. The Toll-like receptors (TLR) 3, 7, 8, and 9 are expressed in immune cells and function as transmembrane pattern recognition receptors to detect foreign nucleic acids. Other proteins that play similar roles, such as RIG-1 and MDA5 are members of a CARD-helicase family and are expressed in the cytoplasm. A third protein, LGP2, is similar to RIG-1 and MDA5, except for lacking a homologous CARD domain. It is thought to act as an element of negative-feedback regulation of intracellular antiviral signaling. At least four isoforms of LGP2 are known to exist.

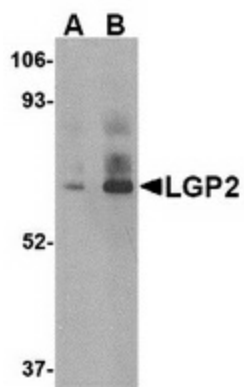


[View online »](#)

Synonyms: D11LGP2; D11lgp2e; LGP2; RLR-3

Protein Pathways: RIG-I-like receptor signaling pathway

### Product images:



Western blot analysis of LGP2 in rat kidney tissue lysate with LGP2 antibody at (A) 1 and (B) 2 ug/ml.