

Product datasheet for **TA306479**

ARMET (MANF) Rabbit Polyclonal Antibody

Product data:

Product Type:	Primary Antibodies
Applications:	IF, IHC, WB
Recommended Dilution:	WB: 1 - 2 ug/mL, ICC: 2.5 ug/mL, IF: 20 ug/mL
Reactivity:	Human, Mouse, Rat
Host:	Rabbit
Isotype:	IgG
Clonality:	Polyclonal
Immunogen:	MANF antibody was raised against a 12 amino acid peptide from near the amino terminus of human MANF.
Formulation:	PBS containing 0.02% sodium azide.
Concentration:	1ug/ul
Purification:	Affinity chromatography purified via peptide column
Conjugation:	Unconjugated
Storage:	Store at -20°C as received.
Stability:	Stable for 12 months from date of receipt.
Gene Name:	mesencephalic astrocyte derived neurotrophic factor
Database Link:	NP_006001 Entrez Gene 74840 Mouse Entrez Gene 315989 Rat Entrez Gene 7873 Human P55145

Background: MANF, also known as ARMET, was initially identified as a protein containing an arginine-rich region that was highly mutated in a variety of tumors. More recently it was identified as a mesencephalic astrocyte-derived neurotrophic factor with selectivity for dopaminergic neurons, similar to glial cell line-derived neurotrophic factor (GDNF) and CDNF. In rat brain slices, MANF enhanced nigral gamma-aminobutyric acid release. Like GDNF and CDNF, MANF has selective neuroprotective activity for dopaminergic neurons suggesting that it may be indicated for the treatment of Parkinson's disease. Expression of MANF has also been shown to be induced during ER stress, suggesting that it may play a role in protein quality control during ER stress. This antibody does not cross-react with CDNF.

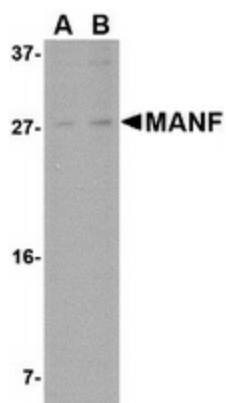


[View online »](#)

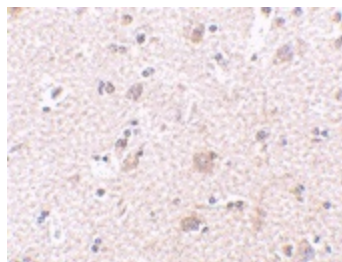
Synonyms: ARMET; ARP

Protein Families: Druggable Genome, Secreted Protein

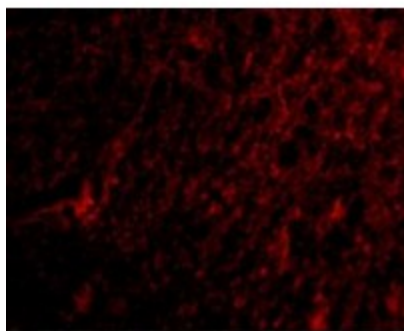
Product images:



Western blot analysis of MANF in rat brain tissue lysate with MANF antibody at (A) 1 and (B) 2 ug/ml.



Immunohistochemistry of MANF in human brain tissue with MANF antibody at 2.5 ug/ml.



Immunofluorescence of MANF in Human Brain tissue with MANF antibody at 20 ug/mL.