

Product datasheet for **TA306477**

ARMETL1 (CDNF) Rabbit Polyclonal Antibody

Product data:

Product Type:	Primary Antibodies
Applications:	IF, IHC, WB
Recommended Dilution:	WB: 1 ug/mL, ICC: 5 ug/mL, IF: 20 ug/mL
Reactivity:	Human, Mouse, Rat
Host:	Rabbit
Isotype:	IgG
Clonality:	Polyclonal
Immunogen:	CDNF antibody was raised against a 12 amino acid peptide from near the amino terminus of human CDNF.
Formulation:	PBS containing 0.02% sodium azide.
Concentration:	1ug/ul
Purification:	Affinity chromatography purified via peptide column
Conjugation:	Unconjugated
Storage:	Store at -20°C as received.
Stability:	Stable for 12 months from date of receipt.
Gene Name:	cerebral dopamine neurotrophic factor
Database Link:	NP_001025125 Entrez Gene 227526 Mouse Entrez Gene 361276 Rat Entrez Gene 441549 Human Q49AH0



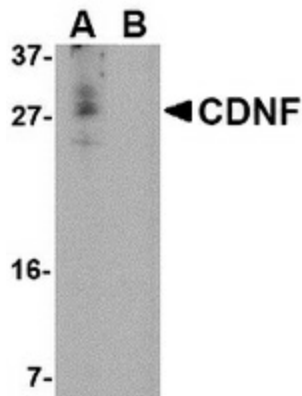
[View online »](#)

Background:

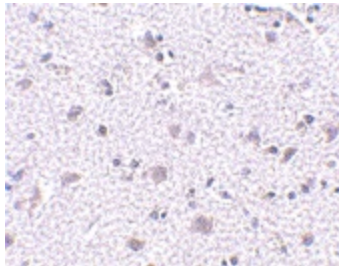
The conserved dopamine neurotrophic factor (CDNF) is a neurotrophic factor for dopaminergic neurons and highly homologous to the mesencephalic-astrocyte-derived neuro-trophic factor. Somewhat surprisingly, CDNF is expressed at higher levels in tissues such as heart, skeletal muscle and testes than in brain. Similar to the glial cell line-derived neurotrophic factor (GDNF), CDNF can prevent the 6-hydroxyamine (6-OHDA)-induced degeneration of dopaminergic neurons in a rat model of Parkinson's disease. Furthermore, CDNF was able to restore the dopaminergic function and prevent the degeneration of dopaminergic neurons in the substantia nigra, suggesting that CDNF might be suitable for the treatment of Parkinson's disease. At least two isoforms of CDNF are known to exist. This antibody does not cross-react with MANF.

Synonyms:

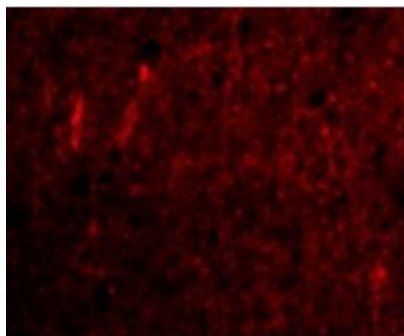
ARMETL1

Product images:

Western blot analysis of CDNF in A-20 cell lysate in (A) the absence and (B) the presence of blocking peptide with CDNF antibody at 1 ug/ml.



Immunohistochemistry of CDNF in human brain tissue with CDNF antibody at 5 ug/ml.



Immunofluorescence of CDNF in Human Brain cells with CDNF antibody at 20 ug/mL.