

## Product datasheet for **TA306476**

### ARMETL1 (CDNF) Rabbit Polyclonal Antibody

#### Product data:

Product Type:	Primary Antibodies
Applications:	IF, IHC, WB
Recommended Dilution:	WB: 2 - 4 ug/mL, ICC: 2.5 ug/mL, IF: 20 ug/mL
Reactivity:	Human, Mouse, Rat
Host:	Rabbit
Isotype:	IgG
Clonality:	Polyclonal
Immunogen:	CDNF antibody was raised against a 9 amino acid peptide from near the carboxy terminus of human CDNF.
Formulation:	PBS containing 0.02% sodium azide.
Concentration:	1ug/ul
Purification:	Affinity chromatography purified via peptide column
Conjugation:	Unconjugated
Storage:	Store at -20°C as received.
Stability:	Stable for 12 months from date of receipt.
Gene Name:	cerebral dopamine neurotrophic factor
Database Link:	<a href="#">NP_001025125</a> <a href="#">Entrez Gene 227526 Mouse</a> <a href="#">Entrez Gene 361276 Rat</a> <a href="#">Entrez Gene 441549 Human</a> <a href="#">Q49AH0</a>



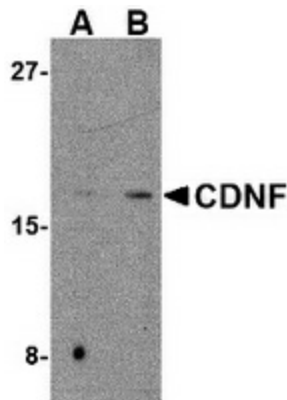
[View online »](#)

**Background:**

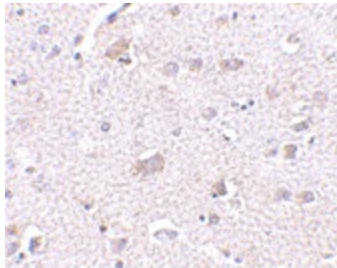
The conserved dopamine neurotrophic factor (CDNF) is a neurotrophic factor for dopaminergic neurons and highly homologous to the mesencephalic-astrocyte-derived neuro-trophic factor. Somewhat surprisingly, CDCF is expressed at higher levels in tissues such as heart, skeletal muscle and testes than in brain. Similar to the glial cell line-derived neurotrophic factor (GDNF), CDFN can prevent the 6-hydroxylamine (6-OHDA)-induced degeneration of dopaminergic neurons in a rat model of Parkinson's disease. Furthermore, CDFN was able to restore the dopaminergic function and prevent the degeneration of dopaminergic neurons in the substantia nigra, suggesting that CDFN might be suitable for the treatment of Parkinson's disease. At least two isoforms of CDFN are known to exist. This antibody does not cross-react with MANF.

**Synonyms:**

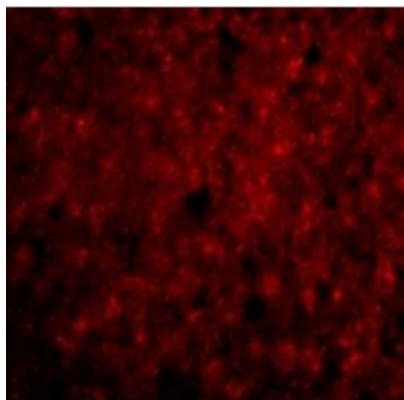
ARMETL1

**Product images:**

Western blot analysis of CDFN in mouse brain tissue lysate with CDFN antibody at (A) 2 and (B) 4 ug/ml.



Immunohistochemistry of CDFN in human brain tissue with CDFN antibody at 2.5 ug/ml.



Immunofluorescence of CDFN in Human Brain cells with CDFN antibody at 20 ug/mL.