

## Product datasheet for **TA306475**

### TEM7 (PLXDC1) Rabbit Polyclonal Antibody

#### Product data:

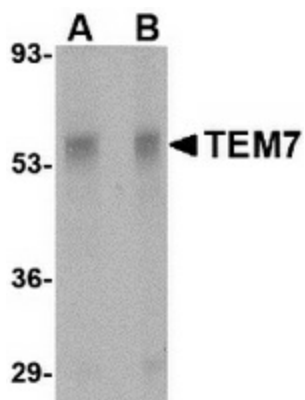
Product Type:	Primary Antibodies
Applications:	IF, IHC, WB
Recommended Dilution:	WB: 0.5 - 1 ug/mL, ICC: 2.5 ug/mL, IF: 20 ug/mL
Reactivity:	Human, Mouse, Rat
Host:	Rabbit
Isotype:	IgG
Clonality:	Polyclonal
Immunogen:	TEM7 antibody was raised against a 16 amino acid peptide from near the center of human TEM7.
Formulation:	PBS containing 0.02% sodium azide.
Concentration:	1ug/ul
Purification:	Affinity chromatography purified via peptide column
Conjugation:	Unconjugated
Storage:	Store at -20°C as received.
Stability:	Stable for 12 months from date of receipt.
Gene Name:	plexin domain containing 1
Database Link:	<a href="#">AAG00869</a> <a href="#">Entrez Gene 57125 Human Q8IUK5</a>
Background:	Tumor endothelial marker 7 (TEM7) was identified through serial analysis of gene expression on endothelial cells isolated from human normal and malignant colorectal tissues. Further experiments verified TEM7 was highly expressed in the endothelium of numerous other cancer types including breast, lung and brain tumors. At least four isoforms of TEM7 are known to exist; these include intracellular, secreted, and membrane-bound forms. A homologous protein, TEM7R (also known as PLXDC2), acts as a binding partner to TEM7 and is also abundantly expressed in the endothelium of malignant colorectal cancer but is absent or rare in normal colon mucosa. High expression of TEM7 is associated with metastasis and poor survival of patients with osteogenic sarcoma.



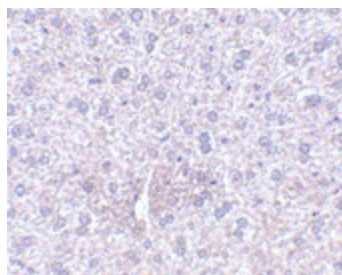
[View online »](#)

Synonyms: TEM3; TEM7

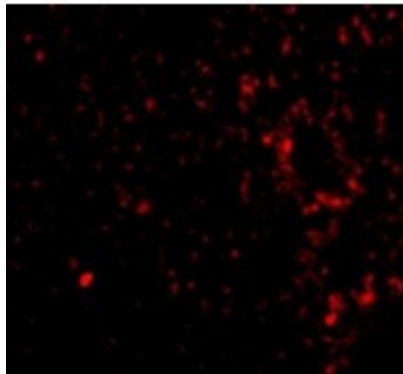
### Product images:



Western blot analysis of TEM7 in rat liver tissue lysate with TEM7 antibody at (A) 0.5 and (B) 1 ug/ml.



Immunohistochemistry of TEM7 in mouse liver tissue with TEM7 antibody at 2.5 ug/ml.



Immunofluorescence of TEM7 in Mouse Liver cells with TEM7 antibody at 20 ug/mL.