

Product datasheet for **TA306473**

BRCC36 (BRCC3) Rabbit Polyclonal Antibody

Product data:

Product Type:	Primary Antibodies
Applications:	IF, IHC, WB
Recommended Dilution:	WB: 0.5 - 2 ug/mL, ICC: 2.5 ug/mL, IF: 20 ug/mL
Reactivity:	Human, Mouse, Rat
Host:	Rabbit
Isotype:	IgG
Clonality:	Polyclonal
Immunogen:	BRCC36 antibody was raised against a 18 amino acid peptide from near the amino terminus of human BRCC36.
Formulation:	PBS containing 0.02% sodium azide.
Concentration:	1ug/ul
Purification:	Affinity chromatography purified via peptide column
Conjugation:	Unconjugated
Storage:	Store at -20°C as received.
Stability:	Stable for 12 months from date of receipt.
Gene Name:	BRCA1/BRCA2-containing complex subunit 3
Database Link:	NP_077308 Entrez Gene 79184 Human P46736

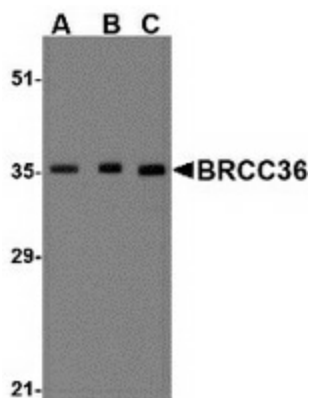
Background: Together with the breast and ovarian predisposition proteins BRCA1 and BRCA2 and RAD51 and BRCC45, BRCC36 forms a holoenzyme complex that possesses a ubiquitin E3 ligase activity. Aberrant levels of BRCC36 were detected in sporadic breast tumors and depletion of either BRCC36 or BRCC45 by siRNA resulted in increased sensitivity to ionizing radiation and defects in the G2/M checkpoint, indicating that BRCC36 acts to enhance cellular survival following DNA damage. Recent experiments have shown that BRCC36 is essential for ionizing radiation-induced BRCA1 phosphorylation and nuclear foci formation, suggesting that BRCC36 may be an important target in the treatment of radiation-resistant breast tumors. At least two isoforms of BRCC36 are known to exist.



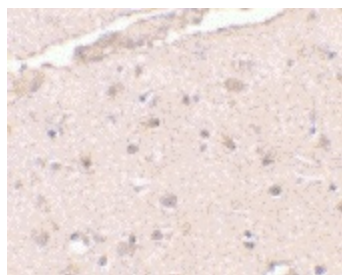
[View online »](#)

Synonyms: BRCC36; C6.1A; CXorf53

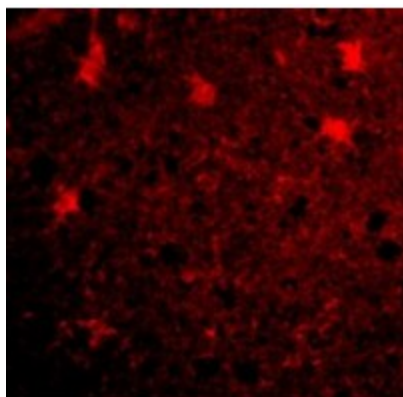
Product images:



Western blot analysis of BRCC36 in MCF7 cell lysate with BRCC36 antibody at (A) 0.5, (B) 1 and (C) 2 ug/ml.



Immunohistochemistry of BRCC36 in human brain tissue with BRCC36 antibody at 2.5 ug/ml.



Immunofluorescence of BRCC36 in Human Brain cells with BRCC36 antibody at 20 ug/mL.