

Product datasheet for **TA306470**

RAP80 (UIMC1) Rabbit Polyclonal Antibody

Product data:

Product Type:	Primary Antibodies
Applications:	IF, IHC, WB
Recommended Dilution:	WB: 2 ug/mL, ICC: 2.5 ug/mL, IF: 20 ug/mL
Reactivity:	Human, Mouse
Host:	Rabbit
Isotype:	IgG
Clonality:	Polyclonal
Immunogen:	RAP80 antibody was raised against a 17 amino acid peptide from near the carboxy terminus of human RAP80.
Formulation:	PBS containing 0.02% sodium azide.
Concentration:	1ug/ul
Purification:	Affinity chromatography purified via peptide column
Conjugation:	Unconjugated
Storage:	Store at -20°C as received.
Stability:	Stable for 12 months from date of receipt.
Gene Name:	ubiquitin interaction motif containing 1
Database Link:	NP_057374 Entrez Gene 20184 Mouse Entrez Gene 51720 Human Q96RL1

Background: RAP80 was initially identified as zinc-finger containing nuclear protein that is highly expressed in testis and interacts with the retinoid-related testis-associated receptor (RTR). Later experiments revealed that RAP80 is recruited by the Coiled-coil domain 98 (CCDC98) protein to the breast cancer-1 protein BRCA1, allowing the formation of BRCA1 foci in response to DNA damage caused by ionizing radiation. Both RAP80 and CCDC98 are required for DNA damage resistance, G2-M checkpoint control, and DNA repair. Cells depleted of either RAP80 or CCDC98 exhibited increased sensitivity to ionizing radiation, although not as much as in BRCA1-depleted cells, suggesting that RAP80 and CCDC98 control only part of the DNA damage response role of BRCA1. At least four isoforms of RAP80 are known to exist.

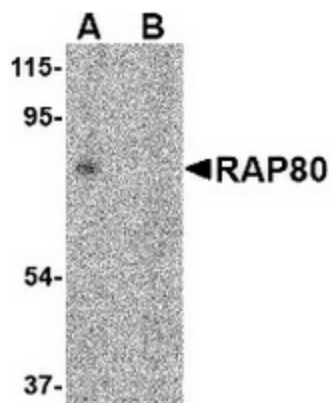


[View online »](#)

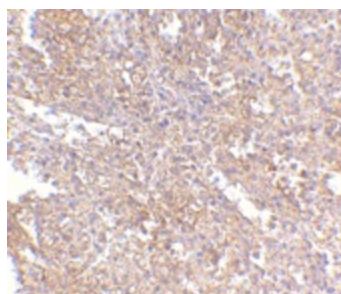
Synonyms: RAP80; X2HRIP110

Protein Families: Druggable Genome, Transcription Factors

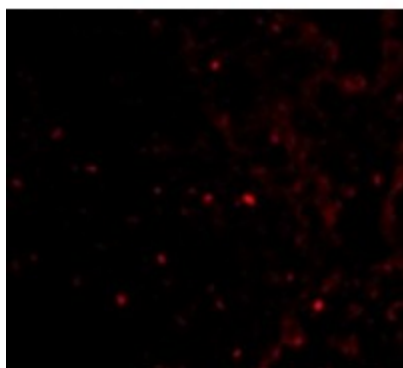
Product images:



Western blot analysis of RAP80 in 293 cell lysate in (A) the absence and (B) presence of blocking peptide with RAP80 antibody at 2 ug/ml.



Immunohistochemistry of RAP80 in human spleen tissue with RAP80 antibody at 2.5 ug/ml.



Immunofluorescence of RAP80 in Human Spleen cells with RAP80 antibody at 20 ug/mL.