

Product datasheet for **TA306467**

TRIM25 Rabbit Polyclonal Antibody

Product data:

Product Type:	Primary Antibodies
Applications:	IF, WB
Recommended Dilution:	WB: 1 ug/mL, ICC: 20 ug/mL, IF: 20 ug/mL
Reactivity:	Human, Mouse
Host:	Rabbit
Isotype:	IgG
Clonality:	Polyclonal
Immunogen:	TRIM25 antibody was raised against a 19 amino acid peptide from near the carboxy terminus of human TRIM25.
Formulation:	PBS containing 0.02% sodium azide.
Concentration:	1ug/ul
Purification:	Affinity chromatography purified via peptide column
Conjugation:	Unconjugated
Storage:	Store at -20°C as received.
Stability:	Stable for 12 months from date of receipt.
Gene Name:	tripartite motif containing 25
Database Link:	NP_005073 Entrez Gene 217069 Mouse Entrez Gene 7706 Human Q14258
Background:	TRIM25, also known as estrogen responsive finger protein (EFP) is a member of the RING finger-B box-coiled coil family and is a downstream target of estrogen receptor α . Mice lacking this gene displayed an underdeveloped uterus and reduced estrogen responsiveness demonstrating that this protein is essential for estrogen dependent proliferation. TRIM25 expression is increased in breast carcinoma where it promotes the growth of breast tumor by functioning as an E3 ubiquitin ligase that targets the negative cell cycle checkpoint 14-3-3s. Recent reports have indicated that TRIM25 E3 ubiquitin ligase is essential for the retinoic-acid-inducible gene 1 (RIG-1) signaling pathway to elicit host antiviral innate immunity.
Synonyms:	EFP; RNF147; Z147; ZNF147

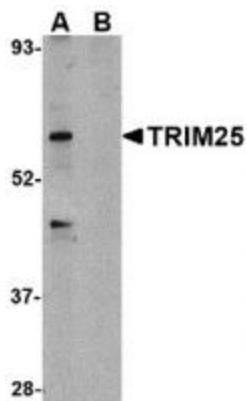


[View online »](#)

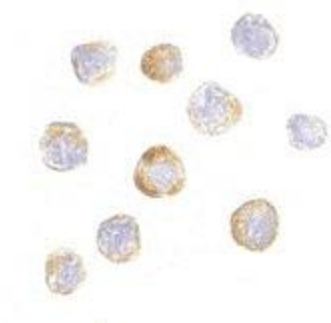
Protein Families: Druggable Genome, Transcription Factors

Protein Pathways: RIG-I-like receptor signaling pathway

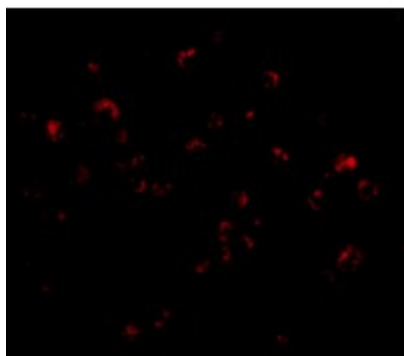
Product images:



Western blot analysis of TRIM25 in HeLa cell lysate in (A) the absence and (B) presence of blocking peptide with TRIM25 antibody at 1 ug/mL.



Immunocytochemistry of TRIM25 in HeLa cells with TRIM25 antibody at 20 ug/mL.



Immunofluorescence of TRIM25 in HeLa cells with TRIM25 antibody at 20 ug/mL.