

Product datasheet for **TA306466**

STEAP4 Rabbit Polyclonal Antibody

Product data:

Product Type:	Primary Antibodies
Applications:	WB
Recommended Dilution:	WB: 0.5 - 1 ug/mL
Reactivity:	Human, Mouse, Rat
Host:	Rabbit
Isotype:	IgG
Clonality:	Polyclonal
Immunogen:	STEAP4 antibody was raised against a 14 amino acid peptide from near the center of human STEAP4.
Formulation:	PBS containing 0.02% sodium azide.
Concentration:	1ug/ul
Purification:	Affinity chromatography purified via peptide column
Conjugation:	Unconjugated
Storage:	Store at -20°C as received.
Stability:	Stable for 12 months from date of receipt.
Gene Name:	STEAP4 metalloredutase
Database Link:	NP_078912 Entrez Gene 117167 Mouse Entrez Gene 499991 Rat Entrez Gene 79689 Human Q687X5

Background: The six-transmembrane epithelial antigen of prostate 4 (STEAP4) is a member of a family of metalloredutases identified as cell-surface antigens in prostate tissue. Similar to two other members of the STEAP family (STEAP 2 and STEAP3), STEAP4 promotes both iron and copper reduction. STEAP4 is highly expressed in placenta, lung, heart and prostate tissues, and overexpressed in prostate cancer cells compared to normal prostate cells. Overexpression of STEAP4 in prostate cells significantly increases cell growth and colony formation, suggesting STEAP4 may have a role in cell proliferation and prostate cancer progression. At least two isoforms are known to exist for this protein. This STEAP4 antibody does not cross-react with other STEAP proteins.

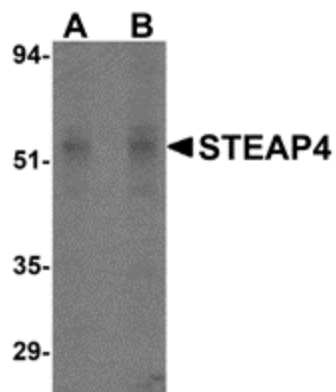


[View online »](#)

Synonyms: STAMP2; TIARP; TNFAIP9

Protein Families: Druggable Genome, Transmembrane

Product images:



Western blot analysis of STEAP4 in rat liver tissue lysate with STEAP4 antibody at (A) 0.5 and (B) 1 ug/ml.