

Product datasheet for **TA306464**

STEAP2 Rabbit Polyclonal Antibody

Product data:

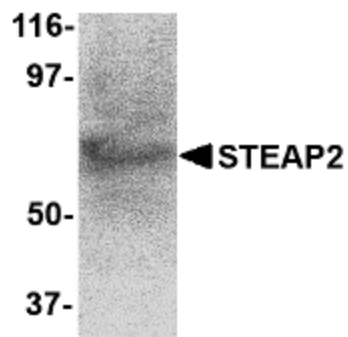
Product Type:	Primary Antibodies
Applications:	IF, IHC, WB
Recommended Dilution:	WB: 1 - 2 ug/mL, ICC: 2.5 ug/mL, IF: 20 ug/mL
Reactivity:	Human, Mouse
Host:	Rabbit
Isotype:	IgG
Clonality:	Polyclonal
Immunogen:	STEAP2 antibody was raised against a 16 amino acid peptide from near the carboxy terminus of human STEAP2.
Formulation:	PBS containing 0.02% sodium azide.
Concentration:	1 mg/ml
Purification:	Affinity chromatography purified via peptide column
Conjugation:	Unconjugated
Storage:	Store at -20°C as received.
Stability:	Stable for 12 months from date of receipt.
Gene Name:	STEAP2 metalloreductase
Database Link:	NP_001035755 Entrez Gene 74051 Mouse Entrez Gene 261729 Human Q8NFT2
Background:	The six-transmembrane epithelial antigen of prostate 2 (STEAP2) is a member of a family of metalloreductases identified as cell-surface antigens in prostate tissue. Similar to two other members of the STEAP family (STEAP 3 and STEAP4), STEAP2 promotes both iron and copper reduction. STEAP2 expression in transfected cells also correlated with iron or copper uptake, suggesting that the STEAP family of proteins may function to stimulate iron and copper uptake. STEAP2 is widely expressed in many tissues in the plasma membrane, but is most highly expressed in prostate. At least three isoforms of STEAP2 are known to exist. This STEAP2 antibody does not cross-react with other STEAP proteins.
Synonyms:	IPCA1; PCANAP1; PUMPCn; STAMP1; STMP



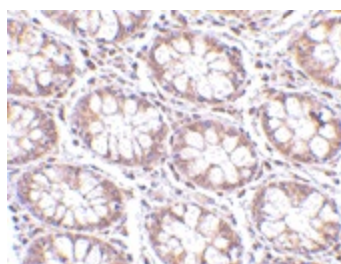
[View online »](#)

Protein Families: Transmembrane

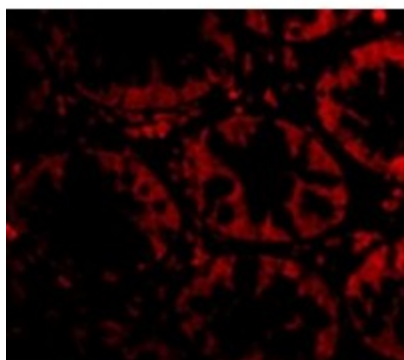
Product images:



Western blot analysis of STEAP2 in human prostate tissue lysate with STEAP2 antibody at 1 ug/ml.



Immunohistochemistry of STEAP2 in human colon tissue with STEAP2 antibody at 2.5 ug/ml.



Immunofluorescence of STEAP2 in Human Colon cells with STEAP2 antibody at 20 ug/mL.