

Product datasheet for **TA306463**

STEAP1 Rabbit Polyclonal Antibody

Product data:

| | |
|-----------------------|---|
| Product Type: | Primary Antibodies |
| Applications: | IF, IHC, WB |
| Recommended Dilution: | WB: 1 - 2 ug/mL, ICC: 2.5 ug/mL, IF: 20 ug/mL |
| Reactivity: | Human, Mouse, Rat |
| Host: | Rabbit |
| Isotype: | IgG |
| Clonality: | Polyclonal |
| Immunogen: | STEAP1 antibody was raised against a 16 amino acid peptide from near the center of human STEAP1. |
| Formulation: | PBS containing 0.02% sodium azide. |
| Concentration: | 1ug/ul |
| Purification: | Affinity chromatography purified via peptide column |
| Conjugation: | Unconjugated |
| Storage: | Store at -20°C as received. |
| Stability: | Stable for 12 months from date of receipt. |
| Gene Name: | six transmembrane epithelial antigen of the prostate 1 |
| Database Link: | NP_036581 Entrez Gene 70358 Mouse Entrez Gene 297738 Rat Entrez Gene 26872 Human Q9UHE8 |



[View online »](#)

Background:

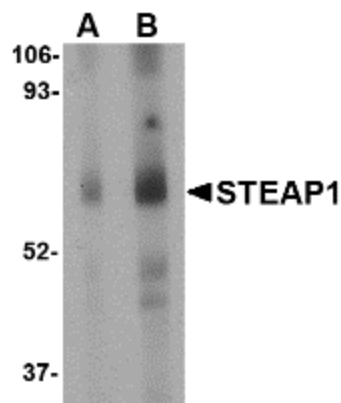
The six-transmembrane epithelial antigen of prostate 1 (STEAP1) was the first member of a family of metalloendopeptidases identified as cell-surface antigens in prostate tissue. The normal function of STEAP is still uncertain; unlike other members of the STEAP family, STEAP1 does not promote iron or copper reduction or uptake and lacks the FNO-like reductase domain critical for activity. However, its expression is highly increased in multiple cancer cell lines, including prostate, bladder, colon, and ovarian cancers. Supporting this is evidence that STEAP1 peptides can be used to stimulate CD8+ T cells from healthy donors, enabling them to recognize STEAP1-positive human tumor cells, suggesting that STEAP1 may be a potential target for cancer immunotherapy. At least three isoforms of STEAP1 are known to exist. This STEAP1 antibody does not cross-react with other STEAP proteins.

Synonyms:

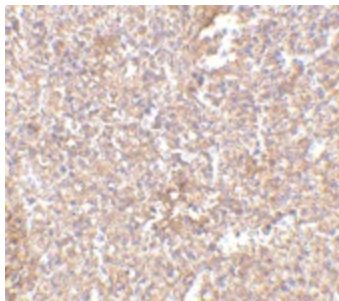
PRSS24; STEAP

Protein Families:

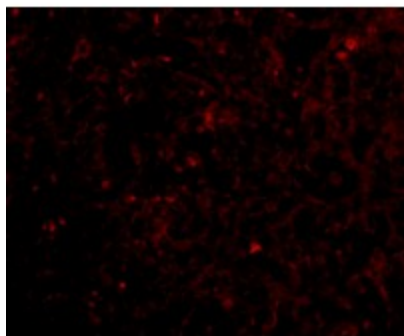
Transmembrane

Product images:

Western blot analysis of STEAP1 in human spleen tissue lysate with STEAP1 antibody at (A) 1 and (B) 2 ug/ml.



Immunohistochemistry of STEAP1 in human spleen tissue with STEAP1 antibody at 2.5 ug/ml.



Immunofluorescence of STEAP1 in human spleen tissue with STEAP1 antibody at 20 ug/mL.