

## Product datasheet for **TA306456**

### Kinesin 5A (KIF5A) Rabbit Polyclonal Antibody

#### Product data:

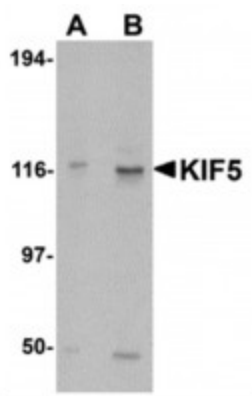
Product Type:	Primary Antibodies
Applications:	IF, IHC, WB
Recommended Dilution:	WB: 0.5 - 1 ug/mL, ICC: 5 ug/mL, IF: 20 ug/mL
Reactivity:	Human, Mouse, Rat
Host:	Rabbit
Isotype:	IgG
Clonality:	Polyclonal
Immunogen:	KIF5 antibody was raised against a 20 amino acid synthetic peptide from near the carboxy terminus of human KIF5. The immunogen is located within amino acids 880 - 930 of KIF5.
Formulation:	PBS containing 0.02% sodium azide.
Concentration:	1ug/ul
Purification:	Affinity chromatography purified via peptide column
Conjugation:	Unconjugated
Storage:	Store at -20°C as received.
Stability:	Stable for 12 months from date of receipt.
Gene Name:	kinesin family member 5A
Database Link:	<a href="#">NP_004975</a> <a href="#">Entrez Gene 16572 Mouse</a> <a href="#">Entrez Gene 314906 Rat</a> <a href="#">Entrez Gene 3798 Human</a> <a href="#">Q12840</a>
Background:	The kinesin superfamily proteins (KIFs) are microtubule-dependent motors that slide along microtubules and transport cellular organelles and mRNA to different parts of the cell. In neurons, KIF5 performs this role in an anterograde fashion from the neuronal cell body to axonal or dendritic terminals. KIF5 was initially differentiated from the ubiquitously expressed kinesin as being highly enriched in subsets of neurons and selectively concentrated in the cell body. KIF5 has at least three known isoforms; this antibody recognizes all three. Mutations in one of the isoforms of KIF5 (KIF5A) are thought to be involved in hereditary spastic paraplegias.
Synonyms:	D12S1889; MY050; NKHC; SPG10



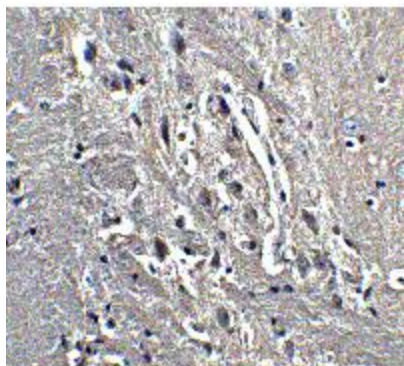
[View online »](#)

Protein Families: Druggable Genome

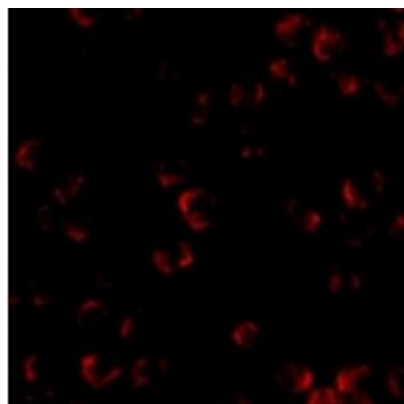
### Product images:



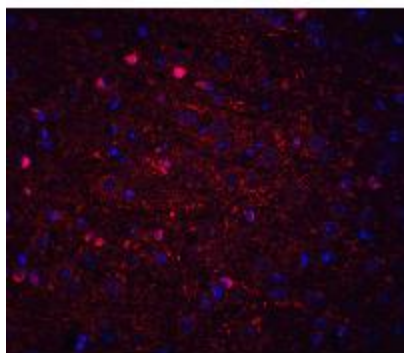
Western blot analysis of KIF5 in K562 cell lysate with KIF5 antibody at (A) 0.5 and (B) 1  $\mu$ g/ml.



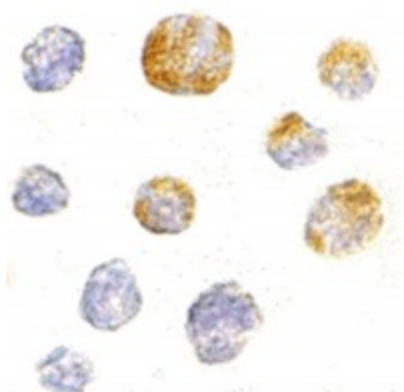
Immunohistochemistry of KIF5 in mouse brain tissue with KIF5 antibody at 5  $\mu$ g/ml.



Immunofluorescence of KIF5 in K562 cells with KIF5 antibody at 20  $\mu$ g/ml.



Immunofluorescence of KIF5 in mouse brain tissue with KIF5 antibody at 20ug/ml.



Immunocytochemistry of KIF5 in K562 cells with KIF5 antibody at 5ug/ml.