

Product datasheet for **TA306454**

TDP43 (TARDBP) Rabbit Polyclonal Antibody

Product data:

Product Type:	Primary Antibodies
Applications:	IF, WB
Recommended Dilution:	WB: 0.5 - 2 ug/mL, ICC: 5 ug/mL, IF: 20 ug/mL
Reactivity:	Human, Mouse, Rat
Host:	Rabbit
Isotype:	IgG
Clonality:	Polyclonal
Immunogen:	TDP43 antibody was raised against a 18 amino acid peptide from near the center of human TDP43.
Formulation:	PBS containing 0.02% sodium azide.
Concentration:	1ug/ul
Purification:	Affinity chromatography purified via peptide column
Conjugation:	Unconjugated
Storage:	Store at -20°C as received.
Stability:	Stable for 12 months from date of receipt.
Gene Name:	TAR DNA binding protein
Database Link:	ABO32290 Entrez Gene 23435 Human Q13148



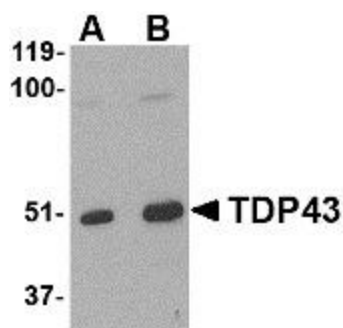
[View online »](#)

Background:

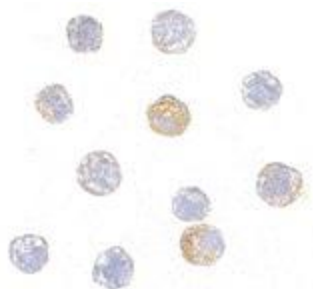
TDP43 was initially identified as a novel cellular protein that bound to HIV-1 virus TAR DNA sequence motifs and acts as a transcriptional repressor to the HIV-1 LTR. Later experiments revealed that TDP43 also regulates the splicing of exon 9 of the cystic fibrosis transmembrane conductance regulator (CFTR), most likely through the association with the UG repeats at the 3' splice site. A hyperphosphorylated, ubiquitinated, and cleaved form of TDP43 known as pathologic TDP43 is the major disease protein in ubiquitin-positive, tau-, and alpha-synuclein-negative frontotemporal dementia (FTLD-U). TDP43 is not related to TRBP1, and RNA binding protein that binds HIV-1 TAR RNA sequences. At least two isoforms are known to exist for this protein; this TDP43 antibody only recognizes the longer of the two isoforms.

Synonyms:

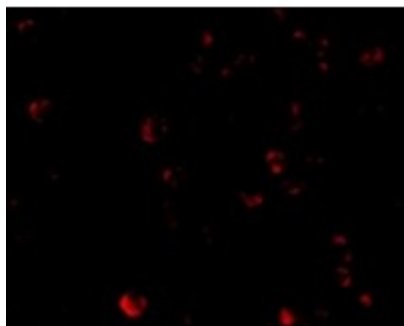
ALS10; TDP-43

Product images:

Western blot analysis of TDP43 in L1210 cell lysate with TDP43 antibody at (A) 0.5, (B) 1 and (C) 2 $\mu\text{g}/\text{mL}$.



Immunocytochemistry of TDP43 in HeLa cells with TDP43 antibody at 5 $\mu\text{g}/\text{mL}$.



Immunofluorescence of TDP43 in HeLa cells with TDP43 antibody at 20 ug/mL.