

## Product datasheet for **TA306452**

### ORAI1 Rabbit Polyclonal Antibody

#### Product data:

Product Type:	Primary Antibodies
Applications:	IF, IHC, WB
Recommended Dilution:	WB: 0.5 - 2 ug/mL, ICC: 2.5 ug/mL
Reactivity:	Human, Mouse, Rat
Host:	Rabbit
Isotype:	IgG
Clonality:	Polyclonal
Immunogen:	ORAI1 antibody was raised against a 16 amino acid synthetic peptide from near the carboxy terminus of human ORAI1. The immunogen is located within the last 50 amino acids of ORAI1.
Formulation:	PBS containing 0.02% sodium azide.
Purification:	Affinity chromatography purified via peptide column
Conjugation:	Unconjugated
Storage:	Store at -20°C as received.
Stability:	Stable for 12 months from date of receipt.
Gene Name:	ORAI calcium release-activated calcium modulator 1
Database Link:	<a href="#">NP_116179</a> <a href="#">Entrez Gene 109305 Mouse</a> <a href="#">Entrez Gene 304496 Rat</a> <a href="#">Entrez Gene 84876 Human</a> <a href="#">Q96D31</a>
Background:	Antigen stimulation of immune cells triggers Ca <sup>++</sup> entry through Ca <sup>++</sup> release-activated Ca <sup>++</sup> (CRAC) channels. ORAI1 is a recently identified four-transmembrane spanning protein that is an essential component of CRAC. A missense mutation in this protein in humans is the cause of one form of hereditary severe combined immune deficiency (SCID) which results in ablated T-cell Ca <sup>++</sup> entry. It has been suggested that ORAI1 functions as a highly selective Ca <sup>++</sup> plasma membrane channel that is gated through interactions with STIM1, the store-activated endoplasmic reticulum Ca <sup>++</sup> sensor. ORAI1 often migrates at a higher than expected molecular weight in SDS-PAGE. This antibody is predicted to have no cross-reactivity to ORAI2 or ORAI3.

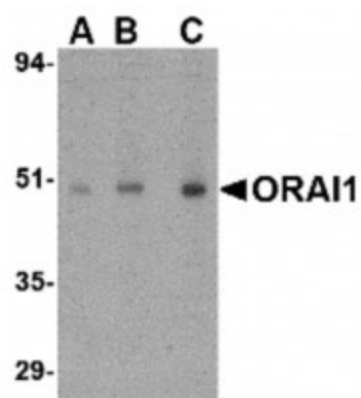


[View online »](#)

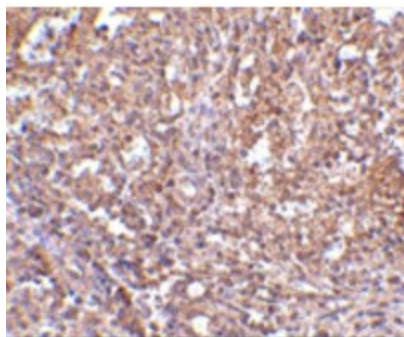
Synonyms: CRACM1; IMD9; ORAT1; TAM2; TMEM142A

Protein Families: Transmembrane

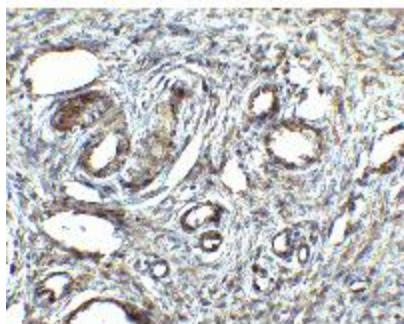
### Product images:



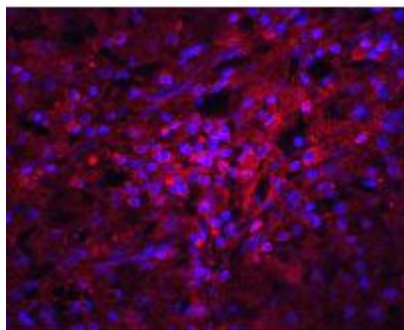
Western blot analysis of ORAI1 in human ovary tissue lysate with ORAI1 antibody at (A) 0.5, (B) 1 and (C) 2 $\mu$ g/ml.



Immunohistochemistry of ORAI1 in human spleen tissue with ORAI1 antibody at 2.5 $\mu$ g/ml.



Immunohistochemistry of ORAI1 in human ovary tissue with ORAI1 antibody at 2.5 $\mu$ g/ml.



Immunofluorescence of ORAI1 in human ovary tissue with ORAI1 antibody at 20ug/ml.