

## Product datasheet for **TA306448**

### IL33 Rabbit Polyclonal Antibody

#### Product data:

Product Type:	Primary Antibodies
Applications:	IF, WB
Recommended Dilution:	WB: 1 - 2 ug/mL, IF: 20 ug/mL
Reactivity:	Human, Mouse, Rat
Host:	Rabbit
Isotype:	IgG
Clonality:	Polyclonal
Immunogen:	IL-33 antibody was raised against a 19 amino acid peptide from near the center of human IL-33.
Formulation:	PBS containing 0.02% sodium azide.
Concentration:	1 mg/ml
Purification:	Affinity chromatography purified via peptide column
Conjugation:	Unconjugated
Storage:	Store at -20°C as received.
Stability:	Stable for 12 months from date of receipt.
Gene Name:	interleukin 33
Database Link:	<a href="#">NP_254274</a> <a href="#">Entrez Gene 77125 Mouse</a> <a href="#">Entrez Gene 361749 Rat</a> <a href="#">Entrez Gene 90865 Human</a> <a href="#">O95760</a>



[View online »](#)

**Background:**

Interleukin-33 (IL-33) is a recently identified member of the IL-1 family of cytokines whose other members include IL-1a/b, IL-1Ra and IL-18. Its receptor has been shown to be ST2, an IL-1 receptor family member that also acts as a negative regulator of TLR-IL-1R signaling and IL-1R accessory protein (IL-1RAcP). Receptor binding of IL-33 activates NF-kappaB and MAP kinases and induces the expression of TH2-associated cytokines such as IL-4, IL-5 and IL-6. Prolonged IL-33 treatment of mice led to the development of eosinophilia, splenomegaly, and severe pathological changes in mucosal organs such as lungs, esophagus and small intestine. Recent experiments have shown that IL-33 can also co-localize with heterochromatin and possesses transcriptional repressor activities, indicating that IL-33 may function as both a proinflammatory cytokine and an intracellular nuclear factor with transcriptional regulatory properties. Despite its predicted molecular weight, IL-33 will often run at higher molecular weight in SDS-PAGE.

**Synonyms:**

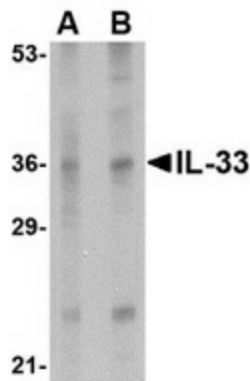
C9orf26; DVS27; IL1F11; NF-HEV; NFEHEV

**Protein Families:**

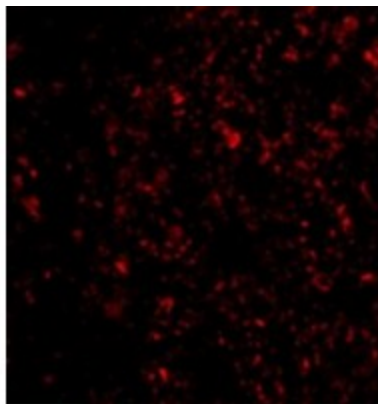
Secreted Protein

**Protein Pathways:**

Cytosolic DNA-sensing pathway

**Product images:**

Western blot analysis of IL-33 in human lymph node tissue lysate with IL-33 antibody at (A) 1 and (B) 2 ug/ml.



Immunofluorescence of IL-33 in Human Lymph Node tissue with IL-33 antibody at 20 ug/mL.