

Product datasheet for **TA306439**

SLPI Rabbit Polyclonal Antibody

Product data:

Product Type:	Primary Antibodies
Applications:	IHC, WB
Recommended Dilution:	WB: 1 - 2 ug/mL, ICC: 10 ug/mL
Reactivity:	Human, Mouse
Host:	Rabbit
Isotype:	IgG
Clonality:	Polyclonal
Immunogen:	SLPI antibody was raised against a 17 amino acid peptide from near the center of human SLPI.
Formulation:	PBS containing 0.02% sodium azide.
Purification:	Affinity chromatography purified via peptide column
Conjugation:	Unconjugated
Storage:	Store at -20°C as received.
Stability:	Stable for 12 months from date of receipt.
Gene Name:	secretory leukocyte peptidase inhibitor
Database Link:	NP_003055 Entrez Gene 20568 Mouse Entrez Gene 6590 Human P03973
Background:	Secretory leukocyte protease inhibitor (SLPI) is produced at mucosal surfaces, primarily the upper respiratory tract and is thought to play an important role in the antiprotease defense mechanism of the lung. SLPI forms inhibitory complexes with numerous proteolytic enzymes such as neutrophil elastase, and has been shown to possess anti-inflammatory, anti-viral, and antibacterial activities. Its expression in oral epithelial cells is stimulated by HIV-1 gp120, suggesting that SLPI is a component of the oral mucosal response to HIV-1. In peripheral blood monocytes, SLPI can inhibit NF-kB activation by inhibiting IκB degradation in the cytoplasm and competing for NF-kB binding sites in the nucleus. This attenuation of the inflammatory response may also act to suppress liver metastases and other cancer cell invasions, but promote blood-borne metastasis via an invasion-independent pathway.

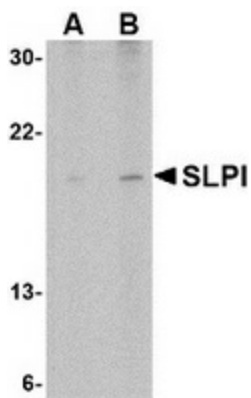


[View online »](#)

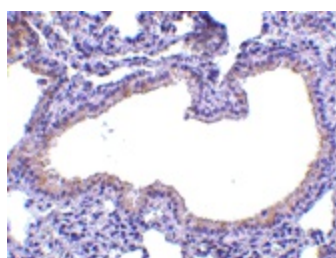
Synonyms: ALK1; ALP; BLPI; HUS1; HUS1-I; MPI; WAP4; WFDC4

Protein Families: Secreted Protein

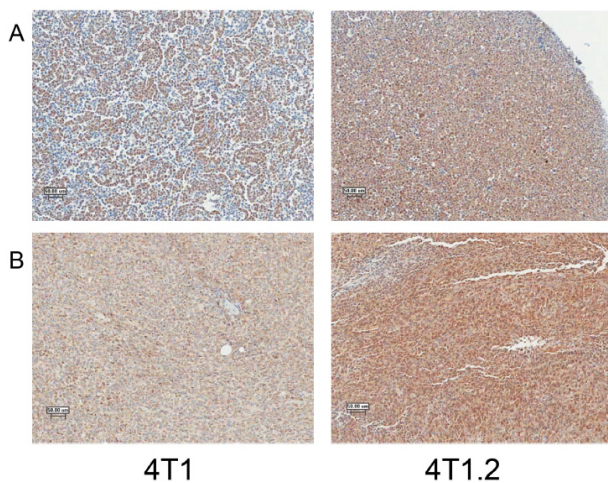
Product images:



Western blot analysis of SLPI in Daudi cell lysate with SLPI antibody at (A) 1 and (B) 2 ug/ml.



Immunohistochemistry of SLPI in mouse lung tissue with SLPI antibody at 10 ug/ml.



IHC staining by using anti-SLPI antibody indicates increased production of SLPI by 4T1.2 cells. (A). Staining of cell pellets of 4T1 and 4T1.2 cells grown in vitro shows that almost all 4T1.2 cells produce SLPI whereas production by 4T1 cells is confined to a subpopulation of cells. (B). Staining of mice breast tumors derived from the injection of 4T1 and 4T1.2 cells also demonstrates a stronger and more uniform staining of SLPI in the 4T1.2 tumors. Dilution: 1:7500