

Product datasheet for **TA306437**

Interferon beta (IFNB1) Rabbit Polyclonal Antibody

Product data:

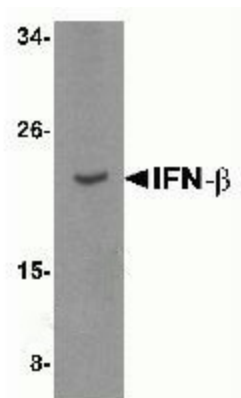
Product Type:	Primary Antibodies
Applications:	IF, IHC, WB
Recommended Dilution:	WB: 5 ug/mL, ICC: 5 ug/mL, IF: 20 ug/mL
Reactivity:	Human, Mouse
Host:	Rabbit
Isotype:	IgG
Clonality:	Polyclonal
Immunogen:	IFN-beta antibody was raised against a 17 amino acid synthetic peptide from near the center of human IFN-b. The immunogen is located within amino acids 110 - 160 of IFN-beta.
Formulation:	PBS containing 0.02% sodium azide.
Concentration:	1 mg/ml
Purification:	Affinity chromatography purified via peptide column
Conjugation:	Unconjugated
Storage:	Antibody can be stored at 4°C up to one year. Antibodies should not be exposed to prolonged high temperatures.
Stability:	Stable for 12 months from date of receipt.
Gene Name:	interferon beta 1
Database Link:	AAC41702 Entrez Gene 3456 Human P01574
Background:	Type I Interferons (IFN-a/b) are produced primarily in response to viral infection by "Natural IFN-producing cells" (IPCs) as part of the host immune response and can also inhibit the development of tumors. IFN-b binding by its receptor results in the activation of the tyrosine kinases Jak1 and Tyk2 and phosphorylation of members of the STAT family of transcription factors, leading to the transcription and expression of the immune response genes. More recently, several members of the toll-like receptor (TLR) family were found to stimulate the production IFN-b. IFN-b is currently used clinically for treatment of tumors, infections and multiple sclerosis.



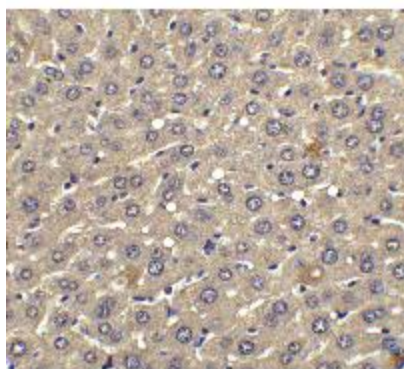
[View online »](#)

Synonyms: IFB; IFF; IFNB

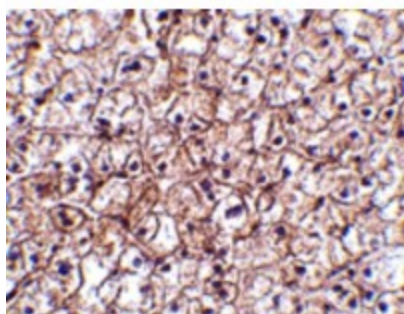
Product images:



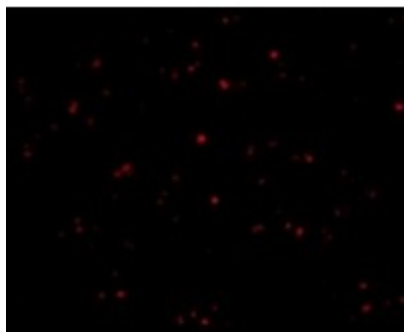
Western blot analysis of IFN-b in A-20 cell lysate with IFN-b antibody at 5ug/ml.



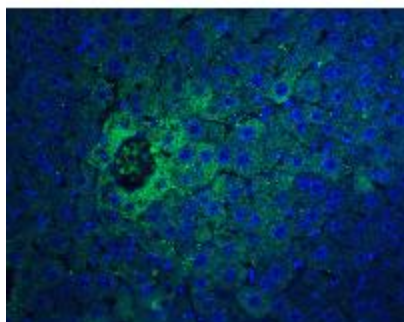
Immunohistochemistry of IFN-b in human liver tissue with IFN-b antibody at 2.5ug/ml.



Immunohistochemistry of IFN-b in human liver tissue with IFN-b antibody at 5ug/ml.



Immunofluorescence of IFN-beta in Human Liver cells with IFN-beta antibody at 20ug/ml.



Immunofluorescence of IFN-beta in mouse liver tissue with IFN beta antibody at 20ug/ml.