

Product datasheet for **TA306434**

Stathmin 1 (STMN1) Rabbit Polyclonal Antibody

Product data:

Product Type:	Primary Antibodies
Applications:	IF, IHC, WB
Recommended Dilution:	WB: 0.5 - 2 ug/mL, ICC: 2.5 ug/mL, IF: 20 ug/mL
Reactivity:	Human, Mouse
Host:	Rabbit
Isotype:	IgG
Clonality:	Polyclonal
Immunogen:	Op18 antibody was raised against a 20 amino acid peptide from near the carboxy terminus of human op18.
Formulation:	PBS containing 0.02% sodium azide.
Concentration:	1ug/ul
Purification:	Affinity chromatography purified via peptide column
Conjugation:	Unconjugated
Storage:	Store at -20°C as received.
Stability:	Stable for 12 months from date of receipt.
Gene Name:	stathmin 1
Database Link:	AAH82228 Entrez Gene 3925 Human P16949



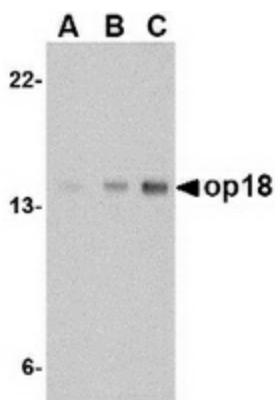
[View online »](#)

Background:

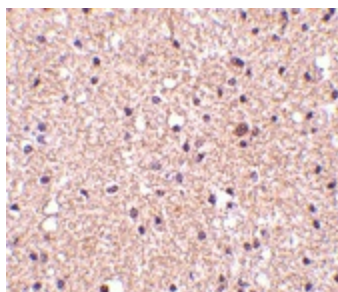
Op18 belongs to the stathmin family of genes and encodes a ubiquitous cytosolic phosphoprotein that may function as an intracellular relay integrating several signaling pathways such as those involved in cell proliferation and differentiation. Op18 has also been shown to be involved in the regulation of the microtubule filament system by destabilizing microtubules, thereby preventing assembly and promoting the disassembly of microtubules. More recently, op18 has been implicated as a potential target of the ASK1-p38 MAP kinase cascade, suggesting that the ASK1-p38 cascade may regulate microtubule dynamics through op18. Op18 is highly expressed in a wide variety of human malignancies, including leukemia, prostate cancer, ovarian carcinoma, and breast carcinoma, suggesting that op18 may be an ideal target for anti-cancer therapeutics.

Synonyms:

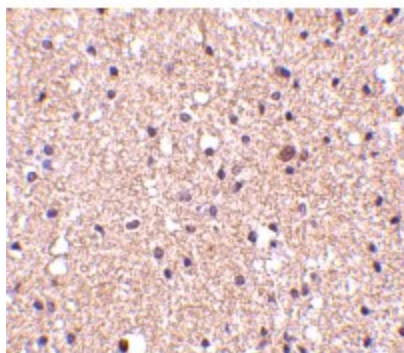
C1orf215; Lag; LAP18; OP18; PP17; PP19; PR22; SMN

Product images:


Western blot analysis of op18 in EL4 cell lysate with op18 antibody at (A) 0.5, (B) 1 and (C) 2 ug/ml.



Immunohistochemistry of op18 in human brain tissue with op18 antibody at 2.5 ug/ml.



Immunofluorescence of op18 in human brain tissue with op18 antibody at 20 ug/mL.