

Product datasheet for **TA306433**

TBC1D1 Rabbit Polyclonal Antibody

Product data:

| | |
|-----------------------|--|
| Product Type: | Primary Antibodies |
| Applications: | WB |
| Recommended Dilution: | WB: 1 - 4 ug/mL |
| Reactivity: | Human |
| Host: | Rabbit |
| Isotype: | IgG |
| Clonality: | Polyclonal |
| Immunogen: | TBC1D1 antibody was raised against a 22 amino acid synthetic peptide from near the carboxy terminus of human TBC1D1. The immunogen is located within the last 50 amino acids of TBC1D1. |
| Formulation: | PBS containing 0.02% sodium azide. |
| Concentration: | 1ug/ul |
| Purification: | Affinity chromatography purified via peptide column |
| Conjugation: | Unconjugated |
| Storage: | Store at -20°C as received. |
| Stability: | Stable for 12 months from date of receipt. |
| Gene Name: | TBC1 domain family member 1 |
| Database Link: | NP_055988 Entrez Gene 23216 Human Q86TI0 |
| Background: | TBC1D1 is the founding member of a family of proteins sharing a 180- to 200-amino acid TBC domain and presumed to have a role in regulating cell growth and differentiation. These proteins share significant homology with TRE2/USP6, yeast Bub2, and CDC16. TBC1D1 and TBC1D4 (AS160) have been demonstrated to be Rab GAPs (GTPase-activating proteins) that link upstream to Akt and phosphoinositide 3-kinase and downstream to Rabs involved in trafficking of GLUT4 vesicles. TBC1D1 regulates insulin-mediated GLUT4 translocation through its GAP activity, and is a likely Akt substrate. Mutations in the Tbc1d1 gene lead to some cases of severe human obesity. |

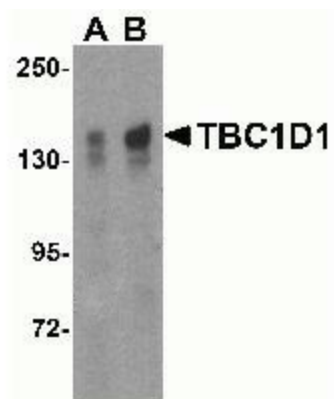


[View online »](#)

Synonyms: TBC; TBC1

Protein Families: Druggable Genome

Product images:



Western blot analysis of TBC1D1 expression in (A) 293 and (B) Daudi cell lysate with TBC1D1 antibody at 2ug/ml.