

Product datasheet for **TA306432**

BUB1 Rabbit Polyclonal Antibody

Product data:

Product Type:	Primary Antibodies
Applications:	IF, WB
Recommended Dilution:	WB: 2 - 4 ug/mL, ICC: 10 ug/mL, IF: 20 ug/mL
Reactivity:	Human, Mouse
Host:	Rabbit
Isotype:	IgG
Clonality:	Polyclonal
Immunogen:	Bub1 antibody was raised against a 19 amino acid peptide from near the amino terminus of human Bub1.
Formulation:	PBS containing 0.02% sodium azide.
Concentration:	1 mg/ml
Purification:	Affinity chromatography purified via peptide column
Conjugation:	Unconjugated
Storage:	Store at -20°C as received.
Stability:	Stable for 12 months from date of receipt.
Gene Name:	BUB1 mitotic checkpoint serine/threonine kinase
Database Link:	NP_004327 Entrez Gene 12235 Mouse Entrez Gene 699 Human O43683

Background: Bub1 was initially identified as the mammalian homolog to the yeast protein through a cDNA screen. Bub1 encodes a kinase involved in the formation of the spindle checkpoint, an important mechanism that ensures high fidelity mitotic chromosome segregation. It is thought to be required for assembly of a functional inner centromere, sister chromatid cohesion via targeting of the Shugoshin protein and metaphase congression. Bub1 functions by phosphorylating cdc20, a member of the mitotic checkpoint complex and activating the spindle checkpoint. A related protein kinase Bub3 interacts with Bub1 and targets it to kinetochores prior to chromosome alignment. Mutations in bub1 have been associated with aneuploidy and several forms of cancer.



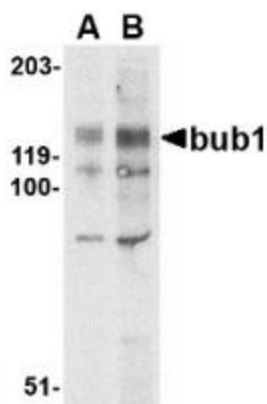
[View online »](#)

Synonyms: BUB1A; BUB1L; hBUB1

Protein Families: Druggable Genome, Protein Kinase

Protein Pathways: Cell cycle, Oocyte meiosis, Progesterone-mediated oocyte maturation

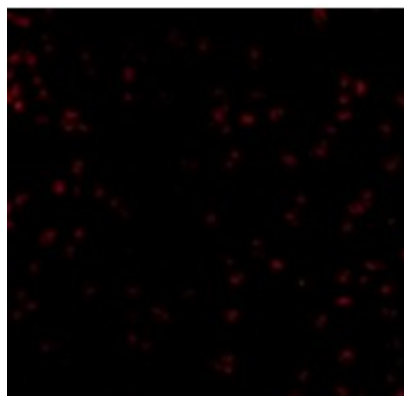
Product images:



Western blot analysis of bub1 in A-20 lysate with bub1 antibody at (A) 2 and (B) 4 ug/mL.



Immunocytochemistry of Bub1 in A20 cells with Bub1 antibody at 10 ug/mL.



Immunofluorescence of Bub1 in A20 cells with Bub1 antibody at 20 ug/mL.