

Product datasheet for **TA306431**

BUB3 Rabbit Polyclonal Antibody

Product data:

Product Type:	Primary Antibodies
Applications:	IF, WB
Recommended Dilution:	WB: 0.5 - 1 ug/mL, ICC: 10 ug/mL, IF: 20 ug/mL
Reactivity:	Human, Mouse
Host:	Rabbit
Isotype:	IgG
Clonality:	Polyclonal
Immunogen:	Bub3 antibody was raised against a 16 amino acid peptide from near the carboxy terminus of human bub3.
Formulation:	PBS containing 0.02% sodium azide.
Concentration:	1ug/ul
Purification:	Affinity chromatography purified via peptide column
Conjugation:	Unconjugated
Storage:	Store at -20°C as received.
Stability:	Stable for 12 months from date of receipt.
Gene Name:	BUB3, mitotic checkpoint protein
Database Link:	NP_001007794 Entrez Gene 12237 Mouse Entrez Gene 9184 Human O43684

Background: The mitotic checkpoint protein Bub3 is involved with the essential spindle checkpoint pathway which operates during early embryogenesis. Bub3 is important during G2 and early mitosis stages, permitting entry into mitosis depending upon the assembly state of microtubules, thus preventing premature sister chromatid separation, mis-segregation and aneuploidy. Bub3 contains four WD repeat domains and is required for the kinetochore localization of Bub1, a related kinase that is necessary for spindle assembly checkpoint function. Bub1 is able to autophosphorylate and can catalyze the phosphorylation of Bub3. Both Bub1 and Bub3 are mutually dependent for function. Altered Bub expression levels may significantly impair mitotic checkpoint function and is associated with tumor cell proliferation.



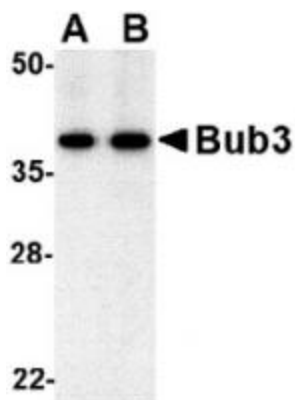
[View online »](#)

Synonyms: BUB3L; hBUB3

Protein Families: Druggable Genome

Protein Pathways: Cell cycle

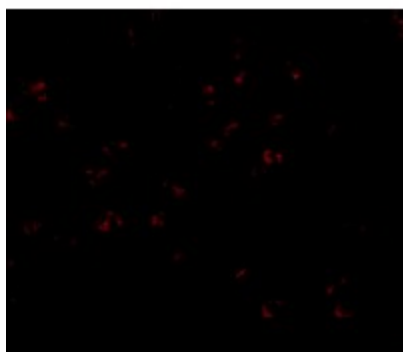
Product images:



Western blot analysis of bub3 in Jurkat cell lysate with bub3 antibody at (A) 0.5 and (B) 1 ug/mL.



Immunocytochemistry of Bub3 in Jurkat cells with Bub3 antibody at 10 ug/mL.



Immunofluorescence of bub3 in Jurkat cells with bub3 antibody at 20 ug/mL.