

Product datasheet for **TA306430**

ORAI3 Rabbit Polyclonal Antibody

Product data:

Product Type:	Primary Antibodies
Applications:	IF, WB
Recommended Dilution:	WB: 2 - 4 ug/mL, ICC: 5 ug/mL, IF: 10 ug/mL
Reactivity:	Human, Mouse
Host:	Rabbit
Isotype:	IgG
Clonality:	Polyclonal
Immunogen:	ORAI3 antibody was raised against a 19 amino acid peptide from near the carboxy terminus of human ORAI3.
Formulation:	PBS containing 0.02% sodium azide.
Purification:	Affinity chromatography purified via peptide column
Conjugation:	Unconjugated
Storage:	Store at -20°C as received.
Stability:	Stable for 12 months from date of receipt.
Gene Name:	ORAI calcium release-activated calcium modulator 3
Database Link:	NP_689501 Entrez Gene 269999 Mouse Entrez Gene 93129 Human Q9BRQ5
Background:	Antigen stimulation of immune cells triggers Ca ⁺⁺ entry through Ca ⁺⁺ release-activated Ca ⁺⁺ (CRAC) channels. ORAI3 is one of two mammalian homologs to ORAI1, a recently identified four-transmembrane spanning protein that is an essential component of CRAC. All three homologs have been shown to function as Ca ⁺⁺ plasma membrane channels gated through interactions with STIM1, the store-activated endoplasmic reticulum Ca ⁺⁺ sensor. However, ORAI3 channels failed to produce detectable Ca ⁺⁺ selective currents in cells co-transfected with ORAI3 and STIM1, indicating that ORAI3 channels undergo a lesser degree of depotentiation than ORAI1 or ORAI2. Na ⁺ currents through ORAI1, 2 and 3 channels were equally inhibited by extracellular Ca ⁺⁺ , indicating that each have similar affinities for Ca ⁺⁺ within the selectivity filter. This antibody is predicted to have no cross-reactivity to ORAI1 or ORAI2.

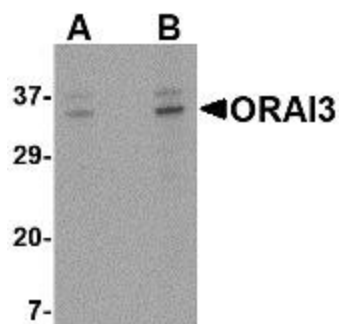


[View online »](#)

Synonyms: TMEM142C

Protein Families: Transmembrane

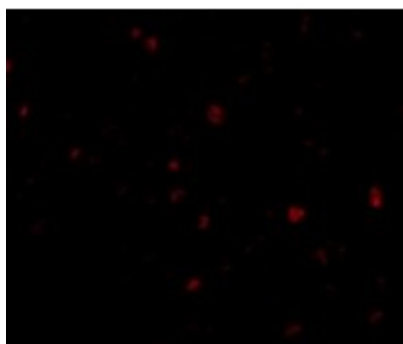
Product images:



Western blot analysis of ORAI3 in A20 cell lysate with ORAI3 antibody at (A) 2 and (B) 4 ug/mL.



Immunocytochemistry of ORAI3 in A20 cells with ORAI3 antibody at 5 ug/mL.



Immunofluorescence of ORAI3 in A20 cells with ORAI3 antibody at 10 ug/mL.