

Product datasheet for **TA306429**

ARFBP1 (HUWE1) Rabbit Polyclonal Antibody

Product data:

Product Type:	Primary Antibodies
Applications:	IF, WB
Recommended Dilution:	WB: 1 ug/mL, ICC: 5 ug/mL, IF: 20 ug/mL
Reactivity:	Human, Mouse, Rat
Host:	Rabbit
Isotype:	IgG
Clonality:	Polyclonal
Immunogen:	ARF-BP1 antibody was raised against a 19 amino acid peptide from near the carboxy terminus of human ARF-BP1.
Formulation:	PBS containing 0.02% sodium azide.
Concentration:	1 mg/ml
Purification:	Affinity chromatography purified via peptide column
Conjugation:	Unconjugated
Storage:	Antibody can be stored at 4°C up to one year. Antibodies should not be exposed to prolonged high temperatures.
Stability:	Stable for 12 months from date of receipt.
Gene Name:	HECT, UBA and WWE domain containing 1, E3 ubiquitin protein ligase
Database Link:	NP_113584 Entrez Gene 59026 Mouse Entrez Gene 501546 Rat Entrez Gene 10075 Human Q7Z6Z7
Background:	The ARF tumor suppressor is a critical regulator of p53 stability. In addition to p53, ARF1 binds to other proteins such as MDM2 and ARF-BP1, a large protein containing HECT, UBA and WWE motifs. ARF-BP1 directly binds and ubiquitinates p53; this activity is inhibited by ARF, indicating that ARF-BP1 is a critical mediator of the p53-dependent and p53-independent tumor suppressor functions of ARF. ARF-BP1 can also catalyze the polyubiquitination of Mcl-1, an anti-apoptotic Bcl-2 family member involved in DNA damage-induced apoptosis. Elimination of ARF-BP1 expression by RNA interference stabilized Mcl-1 protein, resulting in an attenuation of apoptosis induced by DNA-damage agents.



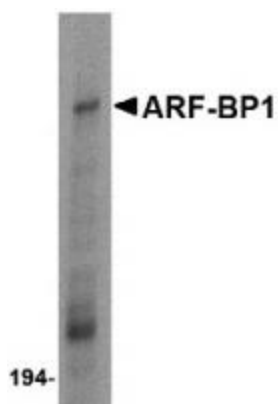
[View online »](#)

Synonyms: ARF-BP1; HECTH9; HSPC272; Ib772; LASU1; MULE; URE-B1; UREB1

Protein Families: Druggable Genome

Protein Pathways: Ubiquitin mediated proteolysis

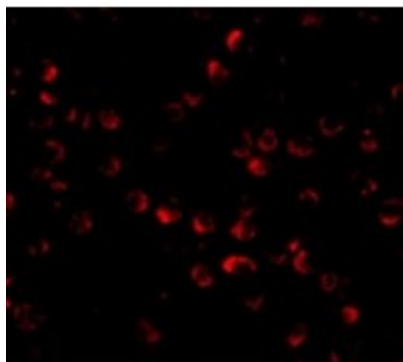
Product images:



Western blot analysis of ARF-BP1 in Daudi cell lysate with ARF-BP1 antibody at 1 ug/mL.



Immunocytochemistry of ARF-BP1 in Daudi cells with ARF-BP1 antibody at 5 ug/mL.



Immunofluorescence of ARF-BP1 in Daudi cells with ARF-BP1 antibody at 20 ug/mL.