

Product datasheet for **TA306427**

Crlf2 Rabbit Polyclonal Antibody

Product data:

Product Type:	Primary Antibodies
Applications:	IF, WB
Recommended Dilution:	WB: 1 ug/mL, IF: 20 ug/mL
Reactivity:	Mouse
Host:	Rabbit
Isotype:	IgG
Clonality:	Polyclonal
Immunogen:	TSLP receptor antibody was raised against a 21 amino acid peptide from near the center of mouse TSLP receptor.
Formulation:	PBS containing 0.02% sodium azide.
Concentration:	1ug/ul
Purification:	Affinity chromatography purified via peptide column
Conjugation:	Unconjugated
Storage:	Store at -20°C as received.
Stability:	Stable for 12 months from date of receipt.
Gene Name:	cytokine receptor-like factor 2
Database Link:	NP_057924 Entrez Gene 57914 Mouse Q8CII9



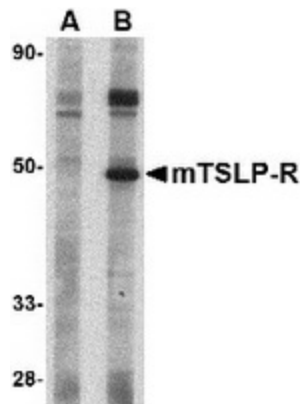
[View online »](#)

Background:

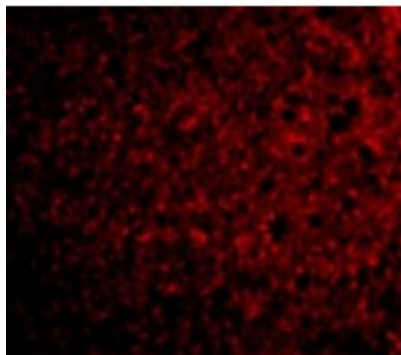
Thymic stromal lymphopoietin (TSLP) has recently been identified as an important factor capable of driving dendritic cell maturation and activation. It is involved in the positive selection of regulatory T cells, maintenance of peripheral CD4+ T cell homeostasis and the induction of CD4+ T cell-mediated allergic reaction. TSLP is also capable of supporting the growth of fetal liver and adult B cell progenitors and their differentiation to the IgM-positive stage of B cell development. Its receptor TSLP-R will bind TSLP in a low-affinity fashion in transfected cells; co-transfection with IL-7R-alpha cDNA results in high-affinity binding and a functional heteromeric complex. This heteromeric receptor requires stat5 for TSLP-mediated signal transduction and is inhibited by SOCS-1. The approximately 75kDa band seen in the immunoblot may be a post-translationally modified form of TSLP-R.

Synonyms:

CRL2; CRLF2Y; IL-XR; ILXR; TSLPR

Product images:

Western blot analysis of TSLP Receptor in mouse heart tissue lysate with TSLP Receptor antibody at 1 ug/ml in (A) the presence and (B) the absence of blocking peptide.



Immunofluorescence of TSLP Receptor in Mouse Liver cells with TSLP Receptor antibody at 20 ug/mL.