

Product datasheet for **TA306426**

Crlf2 Rabbit Polyclonal Antibody

Product data:

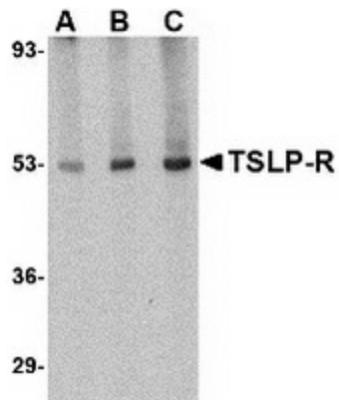
Product Type:	Primary Antibodies
Applications:	IF, IHC, WB
Recommended Dilution:	WB: 0.5 - 1 ug/mL, ICC: 5 ug/mL, IF: 20 ug/mL
Reactivity:	Human
Host:	Rabbit
Isotype:	IgG
Clonality:	Polyclonal
Immunogen:	TSLP Receptor antibody was raised against a 19 amino acid peptide from near the center of human TSLP receptor.
Formulation:	PBS containing 0.02% sodium azide.
Concentration:	1ug/ul
Purification:	Affinity chromatography purified via peptide column
Conjugation:	Unconjugated
Storage:	Store at -20°C as received.
Stability:	Stable for 12 months from date of receipt.
Gene Name:	cytokine receptor-like factor 2
Database Link:	NP_071431 Q8CII9
Background:	Thymic stromal lymphopoietin (TSLP) has recently been identified as an important factor capable of driving dendritic cell maturation and activation. It is involved in the positive selection of regulatory T cells, maintenance of peripheral CD4+ T cell homeostasis and the induction of CD4+ T cell-mediated allergic reaction. TSLP is also capable of supporting the growth of fetal liver and adult B cell progenitors and their differentiation to the IgM-positive stage of B cell development. Its receptor TSLP-R will bind TSLP in a low-affinity fashion in transfected cells; co-transfection with IL-7R-alpha cDNA results in high-affinity binding and a functional heteromeric complex. This heteromeric receptor requires stat5 for TSLP-mediated signal transduction and is inhibited by SOCS-1. Despite its predicted molecular weight, TSLP-R often migrates at a higher molecular weight in SDS-PAGE.



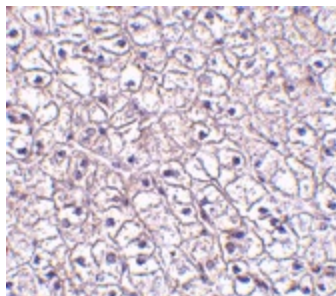
[View online »](#)

Synonyms: CRL2; CRLF2Y; TSLPR

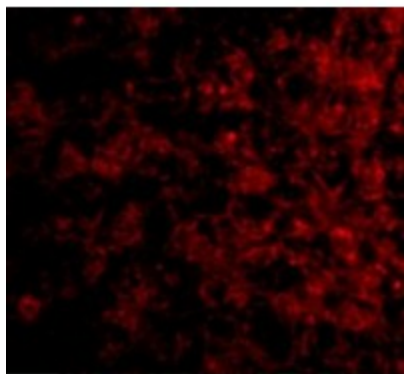
Product images:



Western blot analysis of TSLP Receptor in human liver tissue lysate with TSLP Receptor antibody at (A) 0.5, (B) 1 and (C) 2 ug/ml.



Immunohistochemistry of TSLP-R in human liver tissue with TSLP-R antibody at 5 ug/ml.



Immunofluorescence of TSLP Receptor in Human Liver tissue with TSLP Receptor antibody at 20 ug/mL.