

Product datasheet for **TA306422**

STIM2 Rabbit Polyclonal Antibody

Product data:

Product Type:	Primary Antibodies
Applications:	IF, IHC, WB
Recommended Dilution:	WB: 0.5 - 1 ug/mL, ICC: 2.5 ug/mL, IF: 20 ug/mL
Reactivity:	Human, Mouse, Rat
Host:	Rabbit
Isotype:	IgG
Clonality:	Polyclonal
Immunogen:	STIM2 antibody was raised against a 18 amino acid peptide from near the carboxy terminus of human STIM2.
Formulation:	PBS containing 0.02% sodium azide.
Concentration:	1ug/ul
Purification:	Affinity chromatography purified via peptide column
Conjugation:	Unconjugated
Storage:	Antibody can be stored at 4°C up to one year. Antibodies should not be exposed to prolonged high temperatures.
Stability:	Stable for 12 months from date of receipt.
Gene Name:	stromal interaction molecule 2
Database Link:	NP_065911 Entrez Gene 57620 Human Q9P246



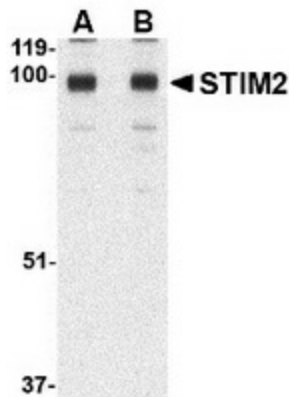
[View online »](#)

Background:

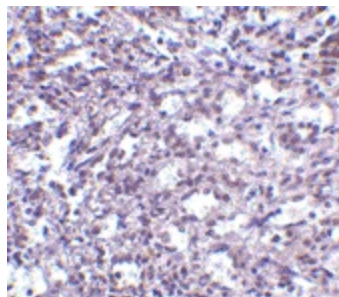
In T lymphocytes, the sole pathway for Ca⁺⁺ entry following antigen-receptor binding is through store-operated Ca⁺⁺-release-activated Ca⁺⁺ (CRAC) channels. These channels are made up of the pore-forming subunit ORAI1 and the stromal interaction molecule 1 (STIM1), a protein that functions as a Ca⁺⁺ sensor and activates the CRAC channels, migrating to the plasma membrane from endoplasmic reticulum (ER)-like sites which act as the Ca⁺⁺ store. A related molecule, STIM2, acts to inhibit the STIM1-mediated store-operated Ca⁺⁺ entry, and can form complexes with STIM1, suggesting they may play a coordinated role in controlling Ca⁺⁺ entry. At least three isoforms of STIM2 are known to exist. This STIM2 antibody is predicted to have no cross-reactivity to STIM1.

Synonyms:

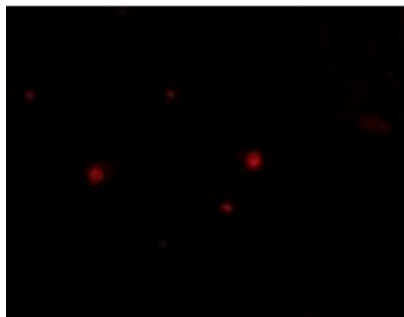
FLJ39527; KIAA1482

Product images:


Western blot analysis of STIM2 in A-20 cell lysate with STIM2 antibody at (A) 0.5 and (B) 1 ug/ml.



Immunohistochemistry of STIM2 in human spleen tissue with STIM2 antibody at 2.5 ug/ml.



Immunofluorescence of STIM2 in Human Spleen cells with STIM2 antibody at 20 ug/mL.