

Product datasheet for **TA306421**

Stromal interaction molecule 1 (STIM1) Rabbit Polyclonal Antibody

Product data:

Product Type:	Primary Antibodies
Applications:	IF, IHC, WB
Recommended Dilution:	WB: 1 - 2 ug/mL, ICC: 2.5 ug/mL
Reactivity:	Human, Mouse, Rat
Host:	Rabbit
Isotype:	IgG
Clonality:	Polyclonal
Immunogen:	STIM1 antibody was raised against a 24 amino acid synthetic peptide from near the carboxy terminus of human STIM1. The immunogen is located within the last 50 amino acids of STIM1.
Formulation:	PBS containing 0.02% sodium azide.
Concentration:	1 mg/ml
Purification:	Affinity chromatography purified via peptide column
Conjugation:	Unconjugated
Storage:	Store at -20°C as received.
Stability:	Stable for 12 months from date of receipt.
Gene Name:	stromal interaction molecule 1
Database Link:	NP_003147 Entrez Gene 20866 Mouse Entrez Gene 361618 Rat Entrez Gene 6786 Human Q13586



[View online »](#)

Background:

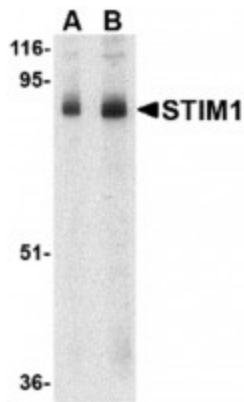
In T lymphocytes, the sole pathway for Ca⁺⁺ entry following antigen-receptor binding is through store-operated Ca⁺⁺-release-activated Ca⁺⁺ (CRAC) channels. These channels are made up of the pore-forming subunit ORAI1 and the stromal interaction molecule 1 (STIM1), a protein that functions as a Ca⁺⁺ sensor and activates the CRAC channels, migrating to the plasma membrane from endoplasmic reticulum (ER)-like sites which act as the Ca⁺⁺ store. A related molecule, STIM2, acts to inhibit the STIM1-mediated store-operated Ca⁺⁺ entry, and can form complexes with STIM1, suggesting they may play a coordinated role in controlling Ca⁺⁺ entry. At least two isoforms of STIM1 are known to exist; this antibody will detect only the larger form. This STIM1 antibody is predicted to have no cross-reactivity to STIM2.

Synonyms:

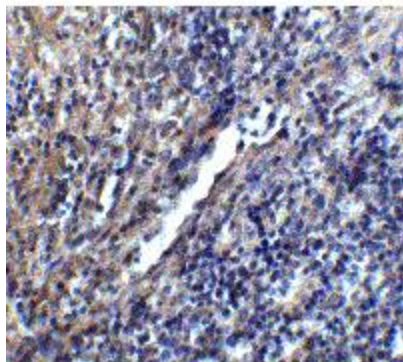
D11S4896E; GOK; IMD10; STRMK; TAM; TAM1

Protein Families:

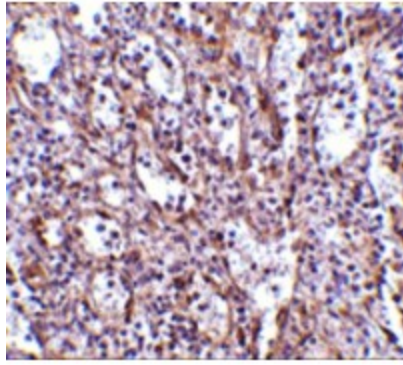
Transmembrane

Product images:


Western blot analysis of STIM1 in mouse thymus tissue lysate with STIM1 antibody at (A) 1 and (B) 2ug/ml.



Immunohistochemistry of STIM1 in mouse spleen tissue with STIM1 antibody at 5ug/ml.



Immunohistochemistry of STIM1 in human spleen tissue with STIM1 antibody at 2.5ug/ml.

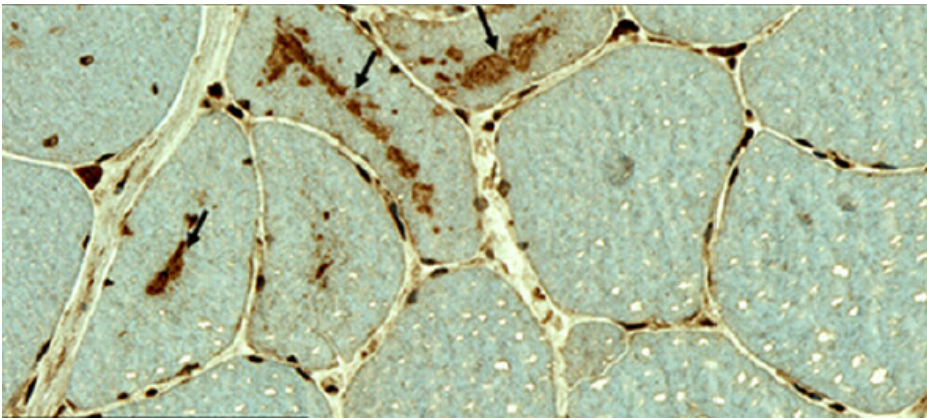
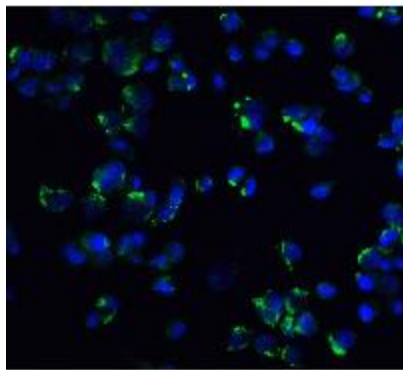
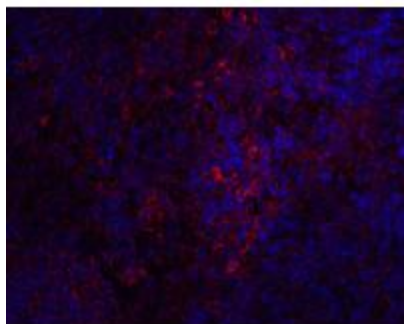


Figure from citation: Immunohistochemistry of STIM1 protein level by using anti-STIM1 antibody in muscle type II fibers in Stormorken syndrome patients. Dilution: 1:200 [View Citation](#)



Immunofluorescence of STIM1 in mouse spleen tissue with STIM1 antibody at 20ug/ml.



Immunofluorescence of STIM1 in Hek293 cells with STIM1 antibody at 20ug/ml.