

Product datasheet for **TA306419**

ORAI2 Rabbit Polyclonal Antibody

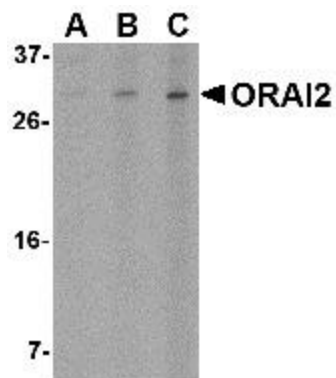
Product data:

Product Type:	Primary Antibodies
Applications:	IF, WB
Recommended Dilution:	WB: 1 - 4 ug/mL, ICC: 5 ug/mL, IF: 20 ug/mL
Reactivity:	Human, Mouse
Host:	Rabbit
Isotype:	IgG
Clonality:	Polyclonal
Immunogen:	ORAI2 antibody was raised against a 15 amino acid peptide from near the carboxy terminus of human ORAI2.
Formulation:	PBS containing 0.02% sodium azide.
Concentration:	1ug/ul
Purification:	Affinity chromatography purified via peptide column
Conjugation:	Unconjugated
Storage:	Store at -20°C as received.
Stability:	Stable for 12 months from date of receipt.
Gene Name:	ORAI calcium release-activated calcium modulator 2
Database Link:	NP_001119812 Entrez Gene 269717 Mouse Entrez Gene 80228 Human Q96SN7
Background:	Antigen stimulation of immune cells triggers Ca ⁺⁺ entry through Ca ⁺⁺ release-activated Ca ⁺⁺ (CRAC) channels. ORAI2 is one of two mammalian homologs to ORAI1, a recently identified four-transmembrane spanning protein that is an essential component of CRAC. Like ORAI1, ORAI2 has been shown to function as a highly selective Ca ⁺⁺ plasma membrane channel that is gated through interactions with STIM1, the store-activated endoplasmic reticulum Ca ⁺⁺ sensor, although at a lesser efficacy than ORAI1. This antibody is predicted to have no cross-reactivity to ORAI1 or ORAI3.
Synonyms:	C7orf19; CBCIP2; MEM142B; TMEM142B
Protein Families:	Transmembrane

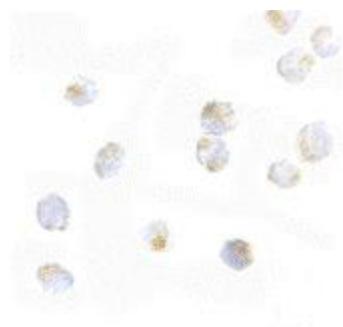


[View online »](#)

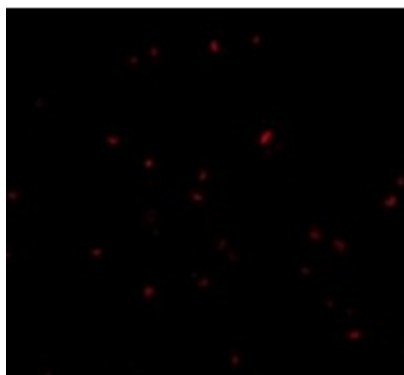
Product images:



Western blot analysis of ORAI2 in Jurkat cell lysate with ORAI2 antibody at (A) 1, (B) 2 and (C) 4 ug/mL.



Immunocytochemistry of ORAI2 in Jurkat cells with ORAI2 antibody at 5 ug/mL.



Immunofluorescence of ORAI2 in Jurkat cells with ORAI2 antibody at 20 ug/mL.