

Product datasheet for **TA306416**

Neurotrypsin (PRSS12) Rabbit Polyclonal Antibody

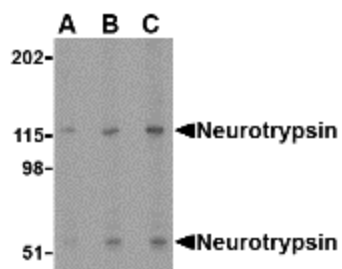
Product data:

Product Type:	Primary Antibodies
Applications:	IF, IHC, WB
Recommended Dilution:	WB: 0.5 - 2 ug/mL, ICC: 2.5 ug/mL, IF: 20 ug/mL
Reactivity:	Human, Mouse, Rat
Host:	Rabbit
Isotype:	IgG
Clonality:	Polyclonal
Immunogen:	Neurotrypsin antibody was raised against a 23 amino acid peptide from near the amino terminus of human neurotrypsin.
Formulation:	PBS containing 0.02% sodium azide.
Concentration:	1ug/ul
Purification:	Affinity chromatography purified via peptide column
Conjugation:	Unconjugated
Storage:	Store at -20°C as received.
Stability:	Stable for 12 months from date of receipt.
Gene Name:	protease, serine 12
Database Link:	CAA04816 Entrez Gene 8492 Human P56730
Background:	Neurotrypsin is a central nervous system-expressed serine protease whose truncation or absence causes nonsyndromic mental retardation. It is most prominently expressed in structures that are involved in the processing and storage of learned behavior and memory, such as the cerebral cortex, the hippocampus, and amygdala. Evidence suggests that neurotrypsin has multiple functions, including axonal outgrowth, maintaining neuronal plasticity, and arranging the perineuronal environment, partly in coordination with other proteases including tissue plasminogen activator. At least two isoforms of neurotrypsin are known to exist.
Synonyms:	BSSP-3; BSSP3; MRT1

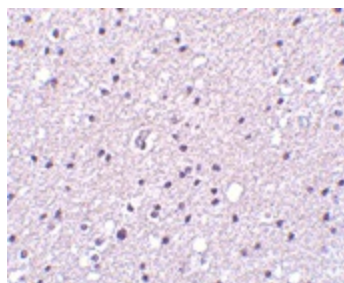


[View online »](#)

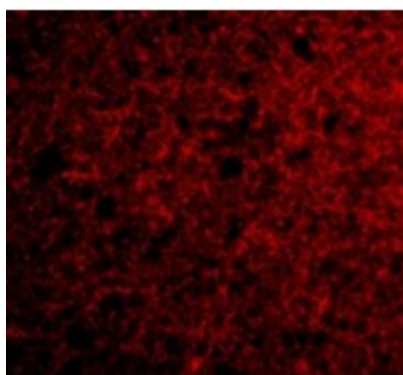
Product images:



Western blot analysis of neurotrypsin in SK-N-SH cell lysate with neurotrypsin antibody at (A) 0.5, (B) 1 and (C) 2 ug/ml.



Immunohistochemistry of Neurotrypsin in human brain tissue with Neurotrypsin antibody at 2.5 ug/ml.



Immunofluorescence of Neurotrypsin in Human Brain cells with Neurotrypsin antibody at 20 ug/mL.