

Product datasheet for **TA306402**

PD L2 (PDCD1LG2) Rabbit Polyclonal Antibody

Product data:

Product Type:	Primary Antibodies
Applications:	IF, IHC, WB
Recommended Dilution:	WB: 0.5 - 2 ug/mL, ICC: 2.5 ug/mL, IF: 20 ug/mL
Reactivity:	Human, Mouse, Rat
Host:	Rabbit
Isotype:	IgG
Clonality:	Polyclonal
Immunogen:	PDL-2 antibody was raised against a 16 amino acid peptide from near the center of human PDL-2.
Formulation:	PBS containing 0.02% sodium azide.
Purification:	Affinity chromatography purified via peptide column
Conjugation:	Unconjugated
Storage:	Store at -20°C as received.
Stability:	Stable for 12 months from date of receipt.
Gene Name:	programmed cell death 1 ligand 2
Database Link:	NP_079515 Entrez Gene 58205 MouseEntrez Gene 309304 RatEntrez Gene 80380 Human Q9BQ51
Background:	Cell-mediated immune responses are initiated by T lymphocytes that are themselves stimulated by cognate peptides bound to MHC molecules on antigen-presenting cells (APC). T-cell activation is generally self-limited as activated T cells express receptors such as PD-1 (also known as PDCD-1) that mediate inhibitory signals from the APC. PD-1 can bind two different but related ligands, PDL-1 and PDL-2, both of which are thought to act as a negative regulator of T cell activation. However, it has been suggested that PDL-2 can act to stimulate an immunogenic response through an alternative receptor from PD-1. At least three isoforms of PDL-2 are known to exist; this antibody is specific to the largest isoform. PDL-2 antibody has no cross-reactivity to PDL-1.
Synonyms:	B7DC; bA574F11.2; Btdc; CD273; PD-L2; PDCD1L2; PDL2

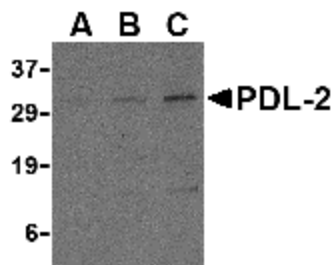


[View online »](#)

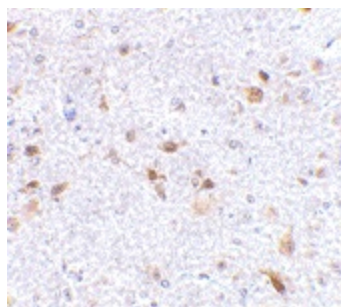
Protein Families: Transmembrane

Protein Pathways: Cell adhesion molecules (CAMs)

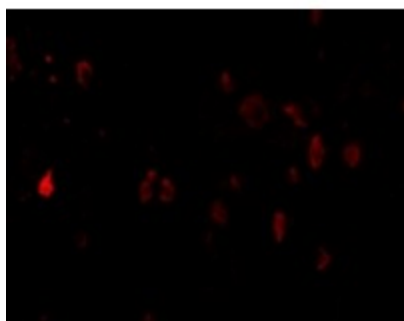
Product images:



Western blot analysis of PDL-2 in Raji cell lysate with PDL-2 antibody at (A) 0.5, (B) 1 and (C) 2 ug/ml.



Immunohistochemistry of PDL-2 in mouse brain tissue with PDL-2 antibody at 2.5 ug/ml.



Immunofluorescence of PDL-2 in Mouse Brain cells with PDL-2 antibody at 20 ug/mL.