

Product datasheet for **TA306401**

PD-L1 (CD274) Rabbit Polyclonal Antibody

Product data:

Product Type:	Primary Antibodies
Applications:	FC, IF, IHC, WB
Recommended Dilution:	WB: 0.5 - 1 ug/mL, ICC: 2.5 ug/mL, IF: 20 ug/mL
Reactivity:	Human, Mouse, Rat
Host:	Rabbit
Isotype:	IgG
Clonality:	Polyclonal
Immunogen:	PD-L1 antibody was raised against a 17 amino acid synthetic peptide from near the center of human PD-L1. The immunogen is located within amino acids 60 - 110 of PD-L1.
Formulation:	PBS containing 0.02% sodium azide.
Purification:	Affinity chromatography purified via peptide column
Conjugation:	Unconjugated
Storage:	Store at -20°C as received.
Stability:	Stable for 12 months from date of receipt.
Gene Name:	CD274 molecule
Database Link:	NP_054862 Entrez Gene 60533 Mouse Entrez Gene 499342 Rat Entrez Gene 29126 Human Q9NZQ7

Background: Cell-mediated immune responses are initiated by T lymphocytes that are themselves stimulated by cognate peptides bound to MHC molecules on antigen-presenting cells (APC). T-cell activation is generally self-limited as activated T cells express receptors such as PD-1 (also known as PDCD-1) that mediate inhibitory signals from the APC. PD-1 can bind two different but related ligands, PDL-1 and PDL-2. PDL-1 is a B7-related protein that inhibits cell-mediated immune responses by reducing the secretion of IL-2 and IL-10 from memory T cells. This suggests that PDL-1 may be useful in reducing allogenic CD4⁺ memory T-cell responses to endothelial cells, thereby reducing the likelihood of host immune responses to allografts. At least two isoforms of PDL-1 are known to exist; this antibody is specific to the larger isoform. PDL-1 antibody has no cross-reactivity to PDL-2.



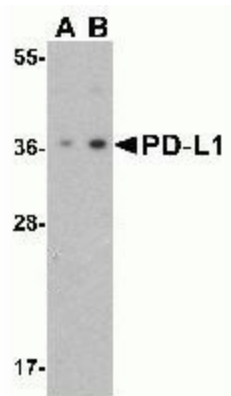
[View online »](#)

Synonyms: B7-H; B7H1; PD-L1; PDCD1L1; PDCD1LG1; PDL1

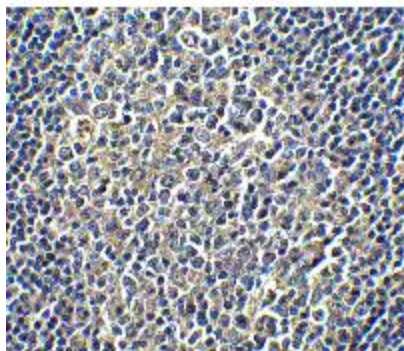
Protein Families: Druggable Genome, Transmembrane

Protein Pathways: Cell adhesion molecules (CAMs)

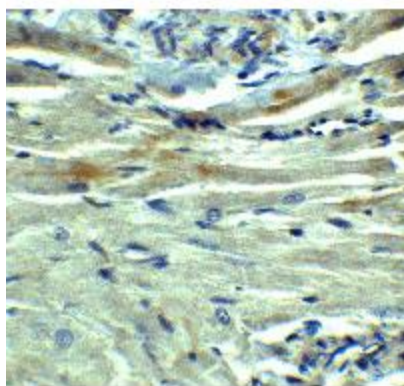
Product images:



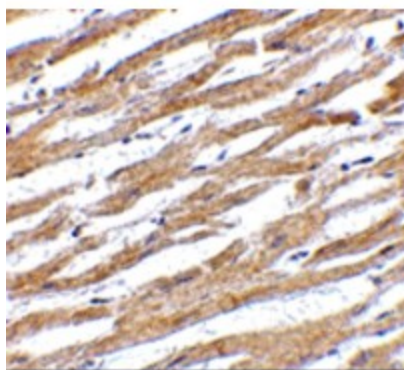
Western blot analysis of PD-L1 in Raji cell lysate with PD-L1 antibody at (A) 0.5 and (B) 1 ug/mL.



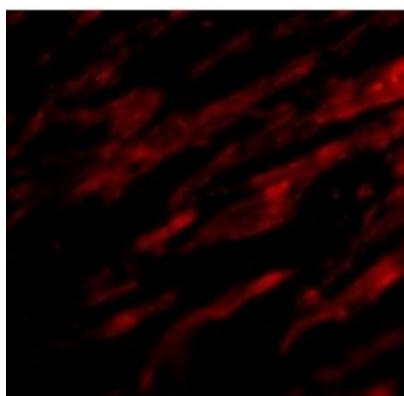
Immunohistochemistry of PD-L1 in human tonsil tissue with PD-L1 antibody at 5 ug/ml.



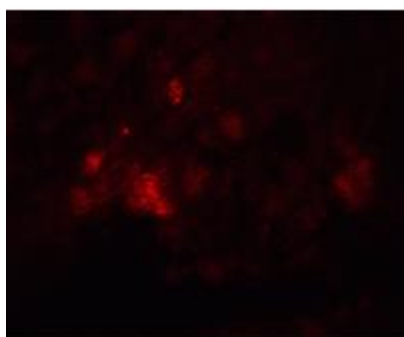
Immunohistochemistry of PD-L1 in rat heart tissue with PD-L1 Antibody at 5 ug/mL.



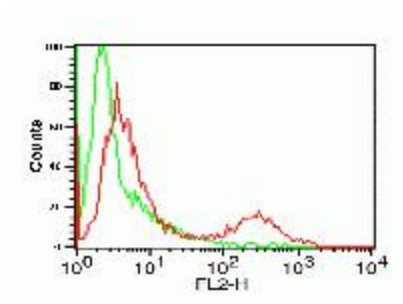
Immunohistochemistry of PD-L1 in human heart tissue with PD-L1 antibody at 2.5 ug/mL.



Immunofluorescence of PD-L1 in Human Heart cells with PD-L1 antibody at 20 ug/mL.



Immunofluorescence of PD-L1 in rat heart tissue with PD-L1 Antibody at 20 ug/mL.



Flow cytometry analysis of A-20 cells using PD-L1 antibody at 0.5 ug/ml. Green: Isotype control. Red : PD-L1 antibody.