

Product datasheet for **TA306396**

SCO2 Rabbit Polyclonal Antibody

Product data:

Product Type:	Primary Antibodies
Applications:	IF, IHC, WB
Recommended Dilution:	WB: 0.5 - 2 ug/mL, ICC: 2.5 ug/mL, IF: 20 ug/mL
Reactivity:	Human
Host:	Rabbit
Isotype:	IgG
Clonality:	Polyclonal
Immunogen:	SCO2 antibody was raised against a 19 amino acid peptide from near the carboxy terminus of human SCO2.
Formulation:	PBS containing 0.02% sodium azide.
Purification:	Affinity chromatography purified via peptide column
Conjugation:	Unconjugated
Storage:	Store at -20°C as received.
Stability:	Stable for 12 months from date of receipt.
Gene Name:	SCO2 cytochrome c oxidase assembly protein
Database Link:	NP_005129 Entrez Gene 9997 Human O43819

Background: Synthesis of cytochrome c oxidase 2 was initially identified in yeast as one of two cytochrome c oxidase (COX) assembly proteins that enable the assembly of cytochrome c holoenzyme, a complex that catalyzes the transfer of reducing equivalents from cytochrome c to molecular oxygen and pumps protons across the inner mitochondrial membrane. Like their yeast homologs, the function of both SCO2 and SCO1 are dependent on copper ion binding. Recent studies suggest that SCO2 expression is regulated by p53, so that a decrease in p53 expression, such as in numerous tumors and cells lines, the drop in SCO2 expression leads to a shift from normal aerobic respiration towards the production of glycolytic ATP. Defects in the SCO2 protein are also associated with fatal infantile cardioencephalomyopathy and COX deficiency.

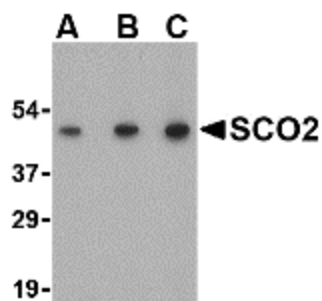


[View online »](#)

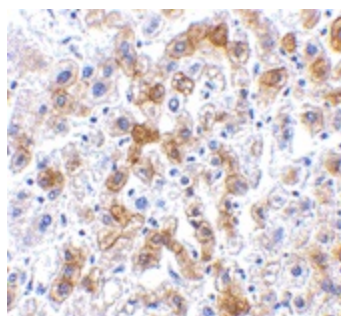
Synonyms: CEMCOX1; MYP6; SCO1L

Protein Families: Druggable Genome

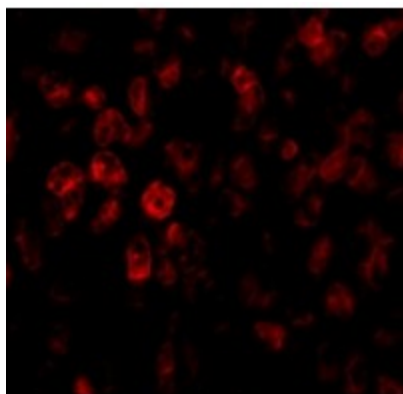
Product images:



Western blot analysis of SCO2 in human liver tissue lysate with SCO2 antibody at (A) 0.5, (B) 1 and (C) 2 µg/ml.



Immunohistochemistry of SCO2 in human liver tissue with SCO2 antibody at 2.5 µg/ml.



Immunofluorescence of SCO2 in Human Liver tissue with SCO2 antibody at 20 µg/mL.