

Product datasheet for **TA306394**

ORAI1 Rabbit Polyclonal Antibody

Product data:

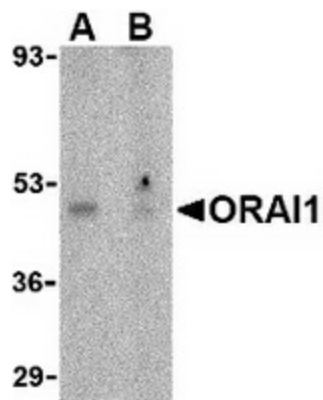
Product Type:	Primary Antibodies
Applications:	IF, IHC, WB
Recommended Dilution:	WB: 1 ug/mL, ICC: 10 ug/mL, IF: 20 ug/mL
Reactivity:	Human, Mouse
Host:	Rabbit
Isotype:	IgG
Clonality:	Polyclonal
Immunogen:	ORAI1 antibody was raised against a 18 amino acid peptide from near the amino terminus of human ORAI1.
Formulation:	PBS containing 0.02% sodium azide.
Purification:	Affinity chromatography purified via peptide column
Conjugation:	Unconjugated
Storage:	Store at -20°C as received.
Stability:	Stable for 12 months from date of receipt.
Gene Name:	ORAI calcium release-activated calcium modulator 1
Database Link:	NP_116179 Entrez Gene 109305 Mouse Entrez Gene 84876 Human Q96D31
Background:	Antigen stimulation of immune cells triggers Ca ⁺⁺ entry through Ca ⁺⁺ release-activated Ca ⁺⁺ (CRAC) channels. ORAI1 is a recently identified four-transmembrane spanning protein that is an essential component of CRAC. A missense mutation in this protein in humans is the cause of one form of hereditary severe combined immune deficiency (SCID) which results in ablated T-cell Ca ⁺⁺ entry. It has been suggested that ORAI1 functions as a highly selective Ca ⁺⁺ plasma membrane channel that is gated through interactions with STIM1, the store-activated endoplasmic reticulum Ca ⁺⁺ sensor. ORAI1 often migrates at a higher than expected molecular weight in SDS-PAGE. This antibody is predicted to have no cross-reactivity to ORAI2 or ORAI3.
Synonyms:	CRACM1; IMD9; ORAT1; TAM2; TMEM142A



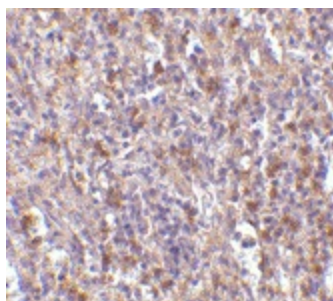
[View online »](#)

Protein Families: Transmembrane

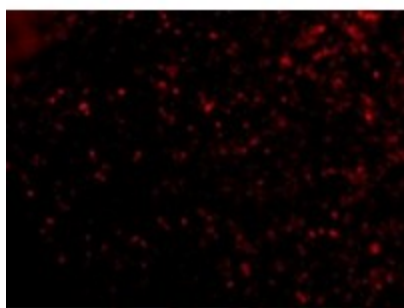
Product images:



Western blot analysis of ORAI1 in human ovary tissue lysate with ORAI1 antibody at 1 ug/ml in the (A) absence or (B) presence of blocking peptide.



Immunohistochemistry of ORAI1 in human spleen tissue with ORAI1 antibody at 10 ug/ml.



Immunofluorescence of ORAI1 in Human Spleen cells with ORAI1 antibody at 20 ug/mL.