

Product datasheet for **TA306393**

MDA5 (IFIH1) Rabbit Polyclonal Antibody

Product data:

Product Type:	Primary Antibodies
Applications:	IF, IHC, WB
Recommended Dilution:	WB: 1 - 4 ug/mL, ICC: 5 ug/mL, IF: 20 ug/mL
Reactivity:	Human, Mouse
Host:	Rabbit
Isotype:	IgG
Clonality:	Polyclonal
Immunogen:	MDA5 antibody was raised against a 16 amino acid peptide from near the center of human MDA5.
Formulation:	PBS containing 0.02% sodium azide.
Concentration:	1ug/ul
Purification:	Affinity chromatography purified via peptide column
Conjugation:	Unconjugated
Storage:	Store at -20°C as received.
Stability:	Stable for 12 months from date of receipt.
Gene Name:	interferon induced with helicase C domain 1
Database Link:	NP_071451 Entrez Gene 71586 Mouse Entrez Gene 64135 Human Q9BYX4



[View online »](#)

Background:

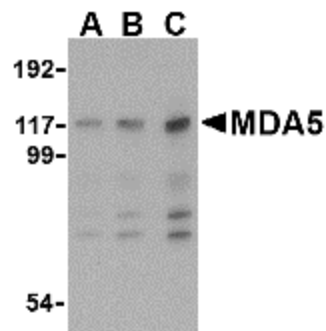
The innate immune system detects viral infection by recognizing various viral components and triggers antiviral responses. Like the toll-like receptor 3 (TLR3), the melanoma differentiation-associated protein 5 (MDA5) recognizes double-stranded (ds) RNA, a molecular pattern associated with viral infection. MDA5, a member of the DEAD/DEAH-box RNA helicase family, consists of an amino-terminal caspase recruitment domain (CARD) and a carboxyl-terminal RNA helicase domain similar to that of the related protein RIG-1. When stimulated by dsRNA, MDA5 recruits the adaptor protein VISA and ultimately causes the activation of IRF-3 and NF- κ B. MDA5 and RIG-1 recognize different types of dsRNA, with MDA5 recognizing poly (I:C). MDA5-null mice were highly susceptible to infection with picornaviruses, which possess such sequences, demonstrating the importance of MDA5 in innate immunity.

Synonyms:

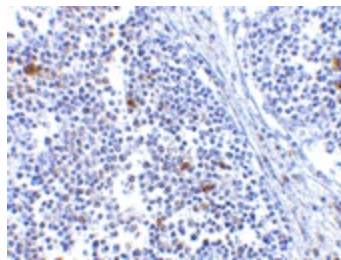
AGS7; Hlcd; IDDM19; MDA-5; MDA5; RLR-2

Protein Pathways:

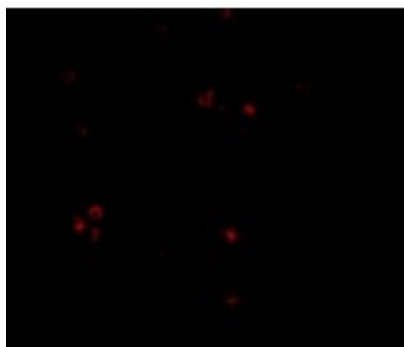
RIG-I-like receptor signaling pathway

Product images:

Western blot analysis of MDA5 in Daudi cell lysate with MDA5 antibody at (A) 1, (B) 2 and (C) 4 μ g/ml.



Immunohistochemistry of MDA5 in human lymph node tissue with MDA5 antibody at 5 μ g/ml.



Immunofluorescence of MDA5 in Human Lymph Node cells with MDA5 antibody at 20 ug/mL.