

Product datasheet for **TA306388**

GPR44 (PTGDR2) Rabbit Polyclonal Antibody

Product data:

Product Type:	Primary Antibodies
Applications:	IF, IHC, WB
Recommended Dilution:	WB: 1 - 2 ug/mL, ICC: 2.5 ug/mL, IF: 20 ug/mL
Reactivity:	Human, Mouse, Rat
Host:	Rabbit
Isotype:	IgG
Clonality:	Polyclonal
Immunogen:	CRTH2 antibody was raised against a 15 amino acid peptide from near the center of human CRTH2.
Formulation:	PBS containing 0.02% sodium azide.
Concentration:	1ug/ul
Purification:	Affinity chromatography purified via peptide column
Conjugation:	Unconjugated
Storage:	Store at -20°C as received.
Stability:	Stable for 12 months from date of receipt.
Gene Name:	prostaglandin D2 receptor 2
Database Link:	NP_004769

[Entrez Gene 14764 Mouse](#)[Entrez Gene 309212 Rat](#)[Entrez Gene 11251 Human](#)
[Q9Y5Y4](#)

Background: The chemoattractant receptor-homologous molecule expressed on Th2 cells (CRTH2) is a recently identified receptor for the prostaglandin D2 (PGD2) in addition to the classic prostaglandin D receptor. CRTH2 is expressed on Th2 cells and eosinophils and mediates chemotaxis of these cells to PGD2 and is thus thought to be a key receptor mediating eosinophil and Th2 recruitment during allergic responses. However, CRTH2-null mice showed enhanced eosinophil recruitment into the lung consistent with observations that the CRTH2-null mice produced significantly higher amounts of interleukin-5 (IL-5) and IL-3. This suggests that CRTH2 plays a nonredundant role in restricting eosinophilia and allergic response in vivo. At least two different isoforms of CRTH2 are known to exist.

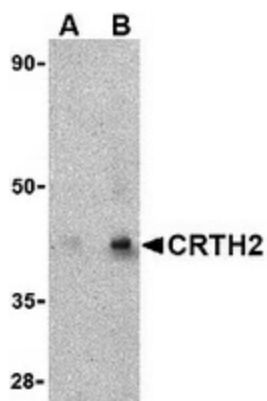


[View online »](#)

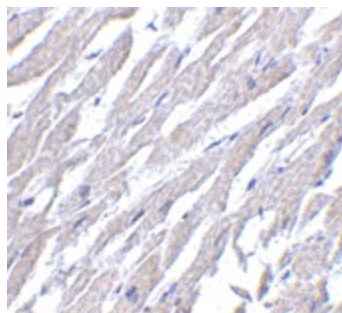
Synonyms: CD294; CRTH2; DL1R; DP2; GPR44

Protein Families: Druggable Genome, GPCR, Transmembrane

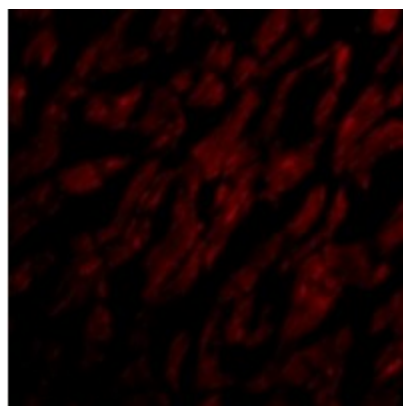
Product images:



Western blot analysis of CRTH2 in human heart tissue lysate with CRTH2 antibody at (A) 1 and (B) 2 ug/ml.



Immunohistochemistry of CRTH2 in human heart tissue with CRTH2 antibody at 2.5 ug/ml.



Immunofluorescence of CRTH2 in Human Heart cells with CRTH2 antibody at 20 ug/mL.