

## Product datasheet for **TA306387**

### **GPR44 (PTGDR2) Rabbit Polyclonal Antibody**

#### **Product data:**

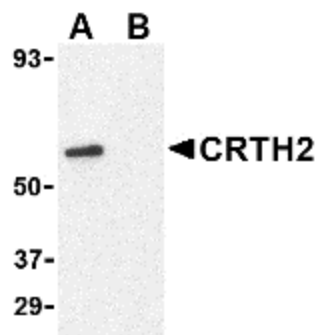
<b>Product Type:</b>	Primary Antibodies
<b>Applications:</b>	IF, IHC, WB
<b>Recommended Dilution:</b>	WB: 1 ug/mL, ICC: 2.5 ug/mL, IF: 20 ug/mL
<b>Reactivity:</b>	Human, Mouse, Rat
<b>Host:</b>	Rabbit
<b>Isotype:</b>	IgG
<b>Clonality:</b>	Polyclonal
<b>Immunogen:</b>	CRTH2 antibody was raised against a 18 amino acid peptide from near the amino terminus of human CRTH2.
<b>Formulation:</b>	PBS containing 0.02% sodium azide.
<b>Purification:</b>	Affinity chromatography purified via peptide column
<b>Conjugation:</b>	Unconjugated
<b>Storage:</b>	Store at -20°C as received.
<b>Stability:</b>	Stable for 12 months from date of receipt.
<b>Gene Name:</b>	prostaglandin D2 receptor 2
<b>Database Link:</b>	<a href="#">NP_004769</a> <a href="#">Entrez Gene 14764 MouseEntrez Gene 309212 RatEntrez Gene 11251 Human Q9Y5Y4</a>
<b>Background:</b>	The chemoattractant receptor-homologous molecule expressed on Th2 cells (CRTH2) is a recently identified receptor for the prostaglandin D2 (PGD2) in addition to the classic prostaglandin D receptor. CRTH2 is expressed on Th2 cells and eosinophils and mediates chemotaxis of these cells to PGD2 and is thus thought to be a key receptor mediating eosinophil and Th2 recruitment during allergic responses. However, CRTH2-null mice showed enhanced eosinophil recruitment into the lung consistent with observations that the CRTH2-null mice produced significantly higher amounts of interleukin-5 (IL-5) and IL-3. This suggests that CRTH2 plays a nonredundant role in restricting eosinophilia and allergic response in vivo. At least two different isoforms of CRTH2 are known to exist.
<b>Synonyms:</b>	CD294; CRTH2; DL1R; DP2; GPR44



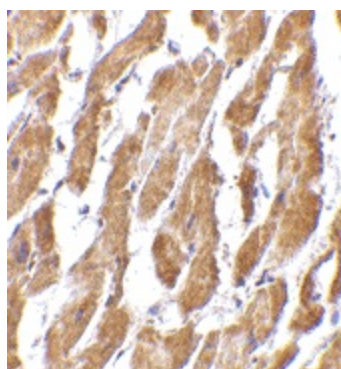
[View online »](#)

Protein Families: Druggable Genome, GPCR, Transmembrane

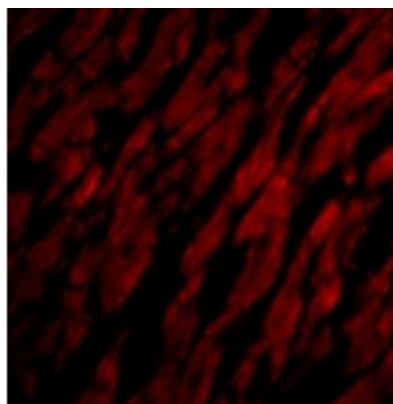
### Product images:



Western blot analysis of CRTH2 in Jurkat cell lysate with CRTH2 antibody at 1 ug/ml in (A) the absence and (B) presence of blocking peptide.



Immunohistochemistry of CRTH2 in human heart tissue with CRTH2 antibody at 2.5 ug/ml.



Immunofluorescence of CRTH2 in Human Heart tissue with CRTH2 antibody at 20 ug/mL.