

## Product datasheet for **TA306383**

### **BANF1 Rabbit Polyclonal Antibody**

#### **Product data:**

Product Type:	Primary Antibodies
Applications:	IF, WB
Recommended Dilution:	WB: 0.5 - 2 ug/mL
Reactivity:	Human, Mouse, Rat
Host:	Rabbit
Isotype:	IgG
Clonality:	Polyclonal
Immunogen:	BANF1 antibody was raised against a 19 amino acid peptide from near the amino terminus of human BANF1.
Formulation:	PBS containing 0.02% sodium azide.
Concentration:	1ug/ul
Purification:	Affinity chromatography purified via peptide column
Conjugation:	Unconjugated
Storage:	Store at -20°C as received.
Stability:	Stable for 12 months from date of receipt.
Gene Name:	barrier to autointegration factor 1
Database Link:	<a href="#">AAH05942</a> <a href="#">Entrez Gene 8815 Human</a> <a href="#">O75531</a>

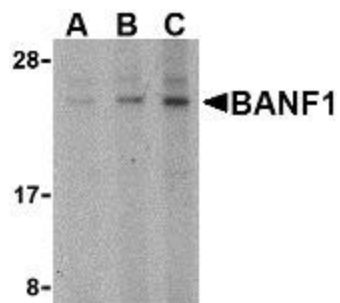
**Background:** Barrier-to-autointegration factor 1 (BANF1) is a conserved chromatin protein that non-specifically binds double-stranded DNA. BAF also interacts with a family of nuclear proteins that include LAP2, emerin, and MAN1. It is also a host cell component of retroviral pre-integration complexes (PICs), including that of HIV. BAF will bind to p55 Gag (the structural precursor of HIV-1 virions) as well as its cleaved product matrix. In addition to being a host cell component of the PIC, it is thought that BAF is also present at low levels in incoming virions, and thus might contribute to the assembly or activity of HIV-1 PICs through direct binding to matrix as well as DNA. Despite its predicted molecular weight, BANF1 often migrates at a higher size in SDS-PAGE.



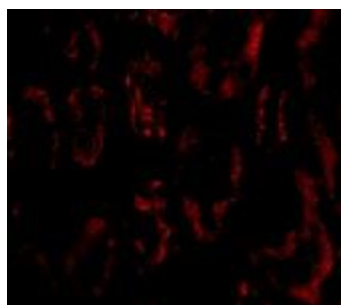
[View online »](#)

Synonyms: BAF; BCRP1; D14S1460; NGPS

### Product images:



Western blot analysis of BANF1 in mouse kidney tissue lysate with BANF1 antibody at (A) 0.5, (B) 1 and (C) 2 ug/mL.



Immunofluorescence of BANF1 in human kidney tissue with BANF1 antibody at 20 ug/mL.