

## Product datasheet for **TA306380**

### RPAIN Rabbit Polyclonal Antibody

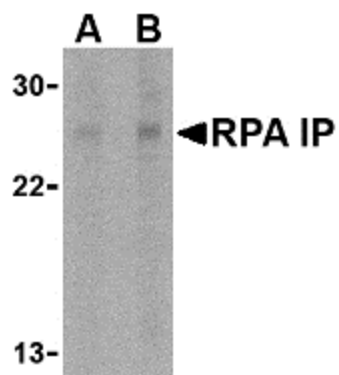
#### Product data:

Product Type:	Primary Antibodies
Applications:	IHC, WB
Recommended Dilution:	WB: 1 - 2 ug/mL, ICC: 2.5 ug/mL
Reactivity:	Human, Mouse, Rat
Host:	Rabbit
Isotype:	IgG
Clonality:	Polyclonal
Immunogen:	RPA IP antibody was raised against a 17 amino acid peptide from near the carboxy terminus of human RPA IP.
Formulation:	PBS containing 0.02% sodium azide.
Concentration:	1ug/ul
Purification:	Affinity chromatography purified via peptide column
Conjugation:	Unconjugated
Storage:	Store at -20°C as received.
Stability:	Stable for 12 months from date of receipt.
Gene Name:	RPA interacting protein
Database Link:	<a href="#">NP_001028174</a> <a href="#">Entrez Gene 69723 Mouse</a> <a href="#">Entrez Gene 287463 Rat</a> <a href="#">Entrez Gene 84268 Human</a> <a href="#">Q86UA6</a>
Background:	Replication protein A (RPA) is a single-stranded-DNA binding protein involved in numerous eukaryotic DNA processes including replication, repair and recombination. RPA interacting protein (RPA IP) has been identified as an adapter protein that is involved in RPA nuclear import instead of the prototypical importin proteins that normally mediate nuclear import. Multiple isoforms of RPA IP are known to exist, with the longest isoform localized to the cytoplasm. Isoform 2 is sumoylated and is located in the PML nuclear body within the nucleus. It has been suggested that this isoform mediates the localization of the RPA complex into the PML nuclear body, thereby participating in RPA function in DNA metabolism.
Synonyms:	HRIP; RIP

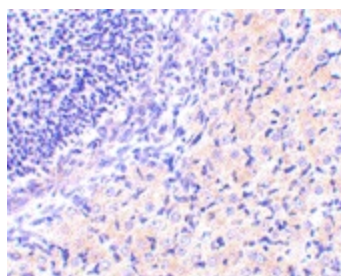


[View online »](#)

## Product images:



Western blot analysis of RPA Interacting Protein in Jurkat cell lysate with RPA Interacting Protein antibody at (A) 1 and (B) 2 ug/ml.



Immunohistochemistry of RPA IP in mouse stomach tissue with RPA IP antibody at 2.5 ug/ml.