

Product datasheet for **TA306378**

APH1A Rabbit Polyclonal Antibody

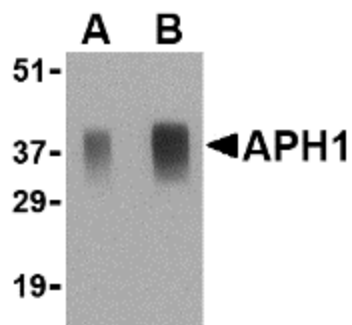
Product data:

Product Type:	Primary Antibodies
Applications:	IHC, WB
Recommended Dilution:	WB: 0.5 - 1 ug/mL, ICC: 5 ug/mL
Reactivity:	Human, Mouse, Rat
Host:	Rabbit
Isotype:	IgG
Clonality:	Polyclonal
Immunogen:	APH1 antibody was raised against a 18 amino acid peptide from near the center of human APH1.
Formulation:	PBS containing 0.02% sodium azide.
Purification:	Affinity chromatography purified via peptide column
Conjugation:	Unconjugated
Storage:	Store at -20°C as received.
Stability:	Stable for 12 months from date of receipt.
Gene Name:	aph-1 homolog A, gamma-secretase subunit
Database Link:	AAH08732 Entrez Gene 51107 Human Q96BI3
Background:	APH1 was initially identified as a component of the Notch pathway in <i>C. elegans</i> . Along with nicastrin, PEN2, and presenilin-1 APH1 is an essential component of the gammasecretase complex which cleave the amyloid precursor protein (APP) at what are known as the gammaand gammasites and can lead to the accumulation of the Amyloid beta peptide Abeta cleavage product that is associated with Alzheimer's disease. APH1 exists in at least three distinct isoforms with APH1a as the principal isoform present in the gammasecretase complex. Mice deficient in this isoform, but not the other two, were lethal at E10.5, with impaired vascular and neural development observed. Despite its predicted molecular weight, APH1 protein often migrates at aberrant locations in SDS-PAGE.
Synonyms:	6530402N02Rik; APH-1; APH-1A; CGI-78

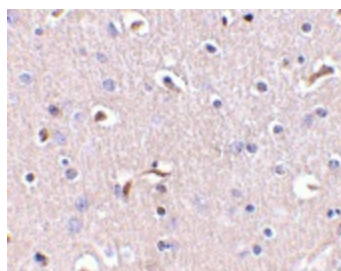


[View online »](#)

Product images:



Western blot analysis of APH1 in human brain tissue lysate with APH1 antibody at (A) 0.5 and (B) 1 ug/ml.



Immunohistochemistry of APH1 in human brain tissue with APH1 antibody at 5 ug/ml.