

## Product datasheet for **TA306375**

### **TMP21 (TMED10) Rabbit Polyclonal Antibody**

#### **Product data:**

Product Type:	Primary Antibodies
Applications:	IF, IHC, WB
Recommended Dilution:	WB: 0.5 - 2 ug/mL, ICC: 2.5 ug/mL, IF: 20 ug/mL
Reactivity:	Human, Mouse, Rat
Host:	Rabbit
Isotype:	IgG
Clonality:	Polyclonal
Immunogen:	TMP21 antibody was raised against a 19 amino acid peptide from near the carboxy terminus of human TMP21.
Formulation:	PBS containing 0.02% sodium azide.
Concentration:	1ug/ul
Purification:	Affinity chromatography purified via peptide column
Conjugation:	Unconjugated
Storage:	Store at -20°C as received.
Stability:	Stable for 12 months from date of receipt.
Gene Name:	transmembrane p24 trafficking protein 10
Database Link:	<a href="#">NP_006818</a> <a href="#">Entrez Gene 68581 Mouse</a> <a href="#">Entrez Gene 84599 Rat</a> <a href="#">Entrez Gene 10972 Human</a> <a href="#">P49755</a>



[View online »](#)

**Background:**

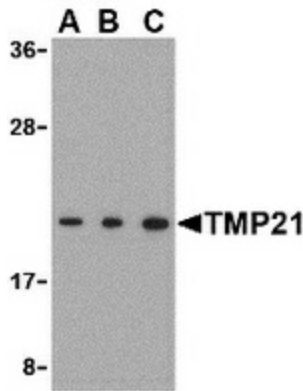
TMP21 is a ubiquitously expressed protein that is involved in vesicular targeting and protein transport. More recent experiments have shown that it is also a component in the presenilin complex and modulates the gamma-secretase but not the epsilon-secretase cleavage activity of the amyloid precursor protein. The presenilin complex is composed of the proteins APH1, nicastrin, and PEN2 in addition to presenilin-1. Together, these proteins cleave the amyloid precursor protein at what is known as the gamma- and epsilon-sites and can lead to the accumulation of the Abeta cleavage product that is associated with Alzheimer’s disease. Co-immunoprecipitation experiments using antibodies against these proteins also yielded TMP21 indicating that TMP21 may play a role in the regulation of this complex. Suppression of TMP21 expression by siRNA in transfected cells caused increased gamma-secretase activity but not epsilon-secretase activity, and increased Abeta production, demonstrating that TMP21 can modulate gamma-secretase activity.

**Synonyms:**

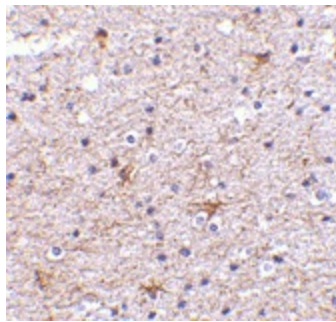
p23; P24(DELTA); p24d1; S31I125; S31III125; Tmp-21-l; TMP21

**Protein Families:**

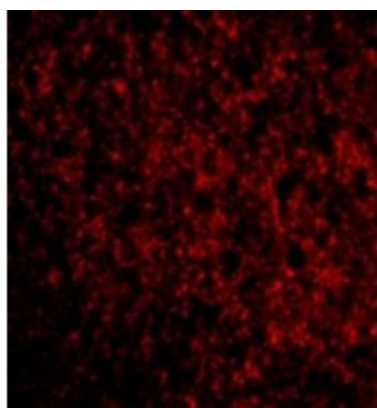
Transmembrane

**Product images:**


Western blot analysis of TMP21 in Raji cell lysate with TMP21 antibody at (A) 0.5 and (B) 1 and (C) 2 ug/ml.



Immunohistochemistry of TMP21 in human brain tissue with TMP21 antibody at 2.5 ug/ml.



Immunofluorescence of TMP21 in Human Brain cells with TMP21 antibody at 20 ug/mL.