

Product datasheet for **TA306374**

FAF1 Rabbit Polyclonal Antibody

Product data:

Product Type:	Primary Antibodies
Applications:	IF, IHC, WB
Recommended Dilution:	WB: 1 - 2 ug/mL, ICC: 2.5 ug/mL, IF: 20 ug/mL
Reactivity:	Human, Mouse, Rat
Host:	Rabbit
Isotype:	IgG
Clonality:	Polyclonal
Immunogen:	FAF1 antibody was raised against a 19 amino acid peptide from near the carboxy terminus of human FAF1.
Formulation:	PBS containing 0.02% sodium azide.
Concentration:	1ug/ul
Purification:	Affinity chromatography purified via peptide column
Conjugation:	Unconjugated
Storage:	Store at -20°C as received.
Stability:	Stable for 12 months from date of receipt.
Gene Name:	Fas associated factor 1
Database Link:	NP_008982 Entrez Gene 14084 Mouse Entrez Gene 140657 Rat Entrez Gene 11124 Human Q9UNN5



[View online »](#)

Background:

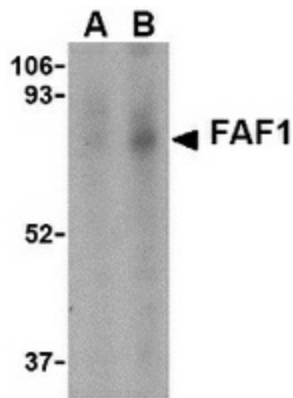
Fas-associated protein 1 (FAF1) was initially identified as a Fas-binding pro-apoptotic protein that is component of the death-inducing signaling complex in Fas-mediated apoptosis (1). FAF1 can also induce apoptosis in the absence of extrinsic death signals when overexpressed although it does not contain typical death motifs such as the death domain, death effector domain, and caspase recruitment domain (1,2). Overexpression of FAF1 also decreases the basal level of NF-kappaB activity in transfected 293 cells, inhibits NF-kappaB activity induced by TNF-alpha, IL-1beta and lipopolysaccharide, and prevents NF-kappaB translocation to the nucleus (3), suggesting that another role of FAF1 is to negatively regulate the activity of NF-kappaB. FAF1 can also interact with the inflammatory signaling PYRIN-containing Apaf-1-like proteins (PYPAFs, also called NALPs) such as PYPAF1, PYPAF2 (NALP2), and PYPAF7, suggesting FAF1 may also be involved in the inflammation pathway (4). Multiple differentially spliced isoforms of FAF1 are known to exist.

Synonyms:

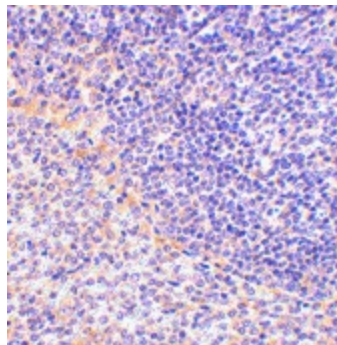
CGI-03; hFAF1; HFAF1s; UBXD12; UBXN3A

Protein Families:

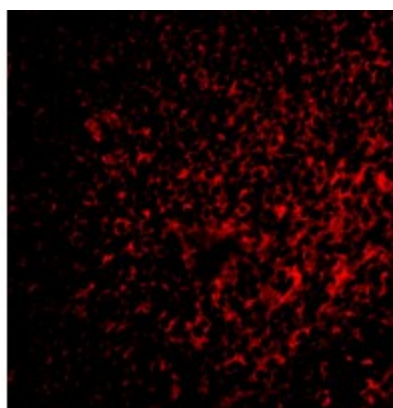
Druggable Genome

Product images:

Western blot analysis of FAF1 in Jurkat cell lysate with FAF1 antibody at (A) 1 and (B) 2 ug/ml.



Immunohistochemistry of FAF1 in rat spleen tissue with FAF1 antibody at 2.5 ug/ml.



Immunofluorescence of FAF1 in rat spleen tissue with FAF1 antibody at 2 ug/mL.