

## Product datasheet for **TA306373**

### PRDM1 Rabbit Polyclonal Antibody

#### Product data:

|                       |   |
|-----------------------|---|
| Product Type:         | Primary Antibodies  |
| Applications:         | IHC, WB   |
| Recommended Dilution: | WB: 0.5 - 1 ug/mL, ICC: 5 ug/mL   |
| Reactivity:           | Human, Mouse, Rat   |
| Host:                 | Rabbit  |
| Isotype:              | IgG   |
| Clonality:            | Polyclonal  |
| Immunogen:            | Blimp-1 antibody was raised against a 17 amino acid peptide from near the amino terminus of human Blimp-1.  |
| Formulation:          | PBS containing 0.02% sodium azide.  |
| Concentration:        | 1ug/ul  |
| Purification:         | Affinity chromatography purified via peptide column   |
| Conjugation:          | Unconjugated  |
| Storage:              | Store at -20°C as received.   |
| Stability:            | Stable for 12 months from date of receipt.  |
| Gene Name:            | PR domain 1   |
| Database Link:        | <a href="#">NP_001189</a><br><a href="#">Entrez Gene 12142 Mouse</a> <a href="#">Entrez Gene 309871 Rat</a> <a href="#">Entrez Gene 639 Human</a><br><a href="#">O75626</a> |



[View online »](#)

**Background:**

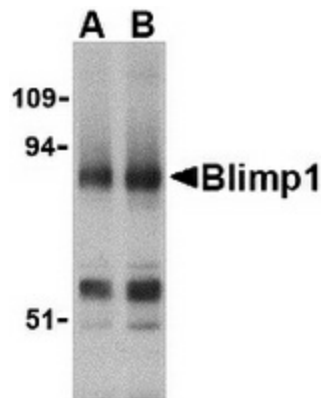
Blimp-1 was initially identified as a zinc finger-containing protein that drives the maturation of B lymphocytes into immunoglobulin-secreting cells (1). Together with X-box-binding protein 1 (XBP1), Blimp-1 is induced upon terminal differentiation of plasma cells (2,3). The transcriptional repressor activity of Blimp-1 has also been found to regulate T cell homeostasis and function, possibly by suppressing the expression of the cytokines IL-2 and interferon-gamma during T cell development (4). More recent experiments have suggested that Blimp-1 also plays a major role in the formation of primordial germ cells (PGC) in developing mammalian embryos. In these experiments, Blimp-1-deficient mutant mouse embryos form a cluster of PGC-like cells which fail to show the expected migration, proliferation, and repression of homeobox genes that normally accompany specification of primordial germ cells (5). Blimp-1 exists as at least two different isoforms.

**Synonyms:**

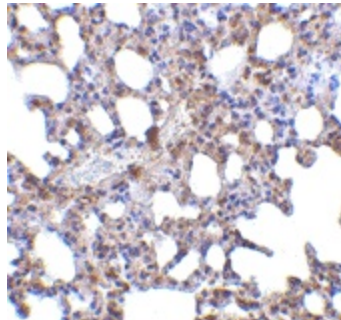
BLIMP1; PRDI-BF1

**Protein Families:**

Transcription Factors

**Product images:**

Western blot analysis of Blimp-1 in mouse lung tissue lysate with Blimp-1 antibody at (A) 0.5 and (B) 1ug/ml.



Immunohistochemistry of Blimp-1 in mouse lung tissue with Blimp-1 antibody at 5 ug/ml.