

Product datasheet for **TA306372**

PRDM1 Rabbit Polyclonal Antibody

Product data:

Product Type:	Primary Antibodies
Applications:	IF, WB
Recommended Dilution:	WB: 0.5 - 1 ug/mL, IF: 20 ug/mL
Reactivity:	Human, Mouse, Rat
Host:	Rabbit
Isotype:	IgG
Clonality:	Polyclonal
Immunogen:	PEN2 antibody was raised against a 13 amino acid peptide from near the carboxy terminus of human PEN2.
Formulation:	PBS containing 0.02% sodium azide.
Concentration:	1ug/ul
Purification:	Affinity chromatography purified via peptide column
Conjugation:	Unconjugated
Storage:	Store at -20°C as received.
Stability:	Stable for 12 months from date of receipt.
Gene Name:	PR domain 1
Database Link:	NP_001189 Entrez Gene 12142 Mouse Entrez Gene 309871 Rat Entrez Gene 639 Human O75626



[View online »](#)

Background:

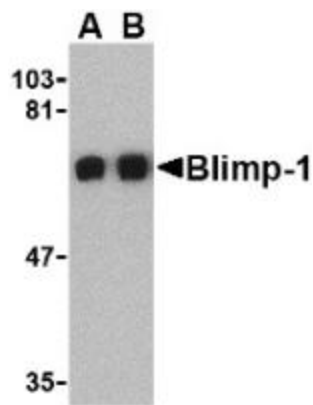
Blimp-1 was initially identified as a zinc finger-containing protein that drives the maturation of B lymphocytes into immunoglobulin-secreting cells. Together with X-box-binding protein 1 (XBP1), Blimp-1 is induced upon terminal differentiation of plasma cells. The transcriptional repressor activity of Blimp-1 has also been found to regulate T cell homeostasis and function, possibly by suppressing the expression of the cytokines IL-2 and interferon-gamma during T cell development. More recent experiments have suggested that Blimp-1 also plays a major role in the formation of primordial germ cells (PGC) in developing mammalian embryos. In these experiments, Blimp-1-deficient mutant mouse embryos form a cluster of PGC-like cells which fail to show the expected migration, proliferation, and repression of homeobox genes that normally accompany specification of primordial germ cells.

Synonyms:

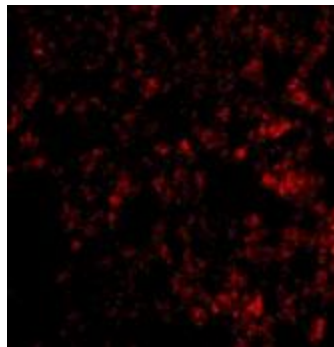
BLIMP1; PRDI-BF1

Protein Families:

Transcription Factors

Product images:

Western blot analysis of Blimp-1 in A549 cell lysate with Blimp-1 antibody at (A) 0.5 and (B) 1ug/mL.



Immunofluorescence of Blimp-1 in mouse lung tissue with Blimp-1 antibody at 20 ug/mL.