

Product datasheet for **TA306371**

LKB1 (STK11) Rabbit Polyclonal Antibody

Product data:

Product Type:	Primary Antibodies
Applications:	WB
Recommended Dilution:	WB: 1 ug/mL
Reactivity:	Human, Mouse
Host:	Rabbit
Isotype:	IgG
Clonality:	Polyclonal
Immunogen:	LKB1 antibody was raised against a 15 amino acid peptide from near the carboxy terminus of human LKB1.
Formulation:	PBS containing 0.02% sodium azide.
Concentration:	1ug/ul
Purification:	Affinity chromatography purified via peptide column
Conjugation:	Unconjugated
Storage:	Store at -20°C as received.
Stability:	Stable for 12 months from date of receipt.
Gene Name:	serine/threonine kinase 11
Database Link:	AAH19334 Entrez Gene 6794 Human Q15831

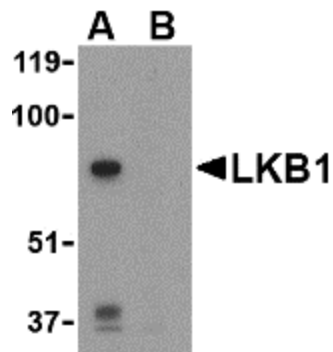
[View online »](#)

Background:

The LKB1 serine/threonine protein kinase was initially identified as a tumor suppressor gene mutated in human Peutz-Jeghers syndrome (PJS), a condition resulting in the growth of numerous intestinal polyps classed as hamartomas. LKB1 exists as a heterotrimeric complex with two other proteins, Ste20-related adaptor protein (STRAD) and MO25. Together, this complex can phosphorylate and activate the AMP-activate protein kinase (AMPK). Following AMPK activation by LKB1, AMPK then phosphorylates TSC1 and TSC2, key components of the metabolism-regulating TOR signaling pathway, which antagonizes the activation for the TOR pathway. LKB1 has also been shown to play a fundamental role in controlling the spatial orientation of structures required to maintain an ordered, polarized epithelium. LKB1 often migrates at a higher than expected molecular weight in SDS-PAGE.

Synonyms:

hLKB1; LKB1; PJS

Product images:


Western blot analysis of LKB1 in PC-3 cell lysate with LKB1 antibody at 1 ug/ml in the (A) absence or (B) presence of blocking peptide.