

Product datasheet for **TA306365**

Sumo 1 (SUMO1) Rabbit Polyclonal Antibody

Product data:

Product Type:	Primary Antibodies
Applications:	IF, WB
Recommended Dilution:	WB: 0.5 - 2 ug/mL, ICC: 5 ug/mL, IF: 20 ug/mL
Reactivity:	Human, Mouse, Rat
Host:	Rabbit
Isotype:	IgG
Clonality:	Polyclonal
Immunogen:	Sumo antibody was raised against a 14 amino acid peptide from near the amino terminus of human sumo .
Formulation:	PBS containing 0.02% sodium azide.
Concentration:	1ug/ul
Purification:	Affinity chromatography purified via peptide column
Conjugation:	Unconjugated
Storage:	Store at -20°C as received.
Stability:	Stable for 12 months from date of receipt.
Gene Name:	small ubiquitin-like modifier 1
Database Link:	AAH66306 Entrez Gene 7341 Human P63165



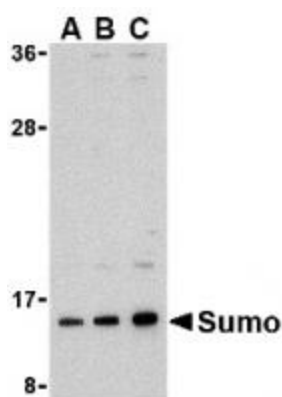
[View online »](#)

Background:

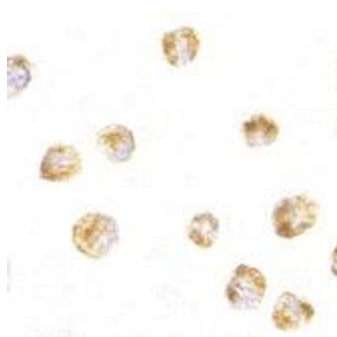
The sumo family of proteins is related both structurally and functionally to ubiquitin in that they are post-translationally attached to the e-amino group of a lysine residue of the substrate protein. This sumoylation plays a number of roles in DNA replication and repair, protein targeting to various subnuclear structures, and the regulation of numerous cellular processes including the inflammatory response in mammalian cells. Sumo was initially identified as a covalent modification of RanGAP1 in studies on nuclear import in mammalian cells. More recently, sumo has been shown to be involved in the regulation of transcription factors, possibly by enhancing their interactions with co-repressors. Sumo is also thought to play some role in the modulation of ubiquitin-mediated degradation of proteins by acting as an inhibitor. At least four different isoforms of sumo are known to exist; Sumo antibody will only recognize isoform 1.

Synonyms:

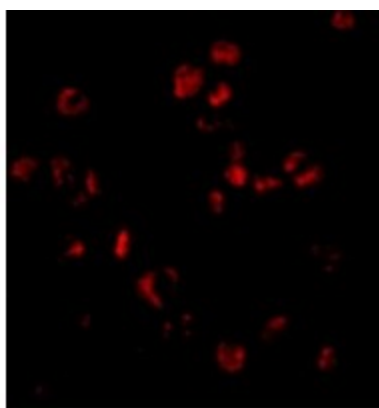
DAP1; GMP1; OFC10; PIC1; SENP2; SMT3; SMT3C; SMT3H3; UBL1

Product images:

Western blot analysis of sumo in HL-60 cell lysate with sumo antibody at (A) 0.5, (B) 1, and (C) 2 ug/mL.



Immunocytochemistry of Sumo in HL60 cells with Sumo antibody at 5 ug/mL.



Immunofluorescence of Sumo in HL60 cells with Sumo antibody at 20 ug/mL.