

Product datasheet for **TA306364**

CBL Rabbit Polyclonal Antibody

Product data:

Product Type:	Primary Antibodies
Applications:	IF, WB
Recommended Dilution:	WB: 0.5 - 2 ug/mL
Reactivity:	Human, Mouse, Rat
Host:	Rabbit
Isotype:	IgG
Clonality:	Polyclonal
Immunogen:	Cbl antibody was raised against a 14 amino acid peptide from near the carboxy terminus of human cbl.
Formulation:	PBS containing 0.02% sodium azide.
Concentration:	1ug/ul
Purification:	Affinity chromatography purified via peptide column
Conjugation:	Unconjugated
Storage:	Store at -20°C as received.
Stability:	Stable for 12 months from date of receipt.
Gene Name:	Cbl proto-oncogene
Database Link:	NP_005179 Entrez Gene 12402 Mouse Entrez Gene 500985 Rat Entrez Gene 867 Human P22681

Background: The mammalian cbl family of ubiquitin ligases consists of three homologs known as cbl (also known as c-Cbl), Cbl-B, and Cbl-3 which share highly conserved a tyrosine-kinase-binding domain, linker and RING finger domain in their amino-terminal halves. Similar to other E3 ubiquitin ligases, Cbl catalyzes the transfer of ubiquitin from an E2 or Ubc (ubiquitin-conjugating) enzyme to the e-amino group of a lysine residue of the substrate protein. Cbl acts to negatively regulate many types of cell-surface receptors, including the Syk protein tyrosine kinase family. Cbl is thought to be involved in T- and B-cell signaling, in addition to thymus development. Of the three known homologs in the cbl family, cbl antibody reacts specifically with cbl. Multiple isoforms of cbl have been reported.



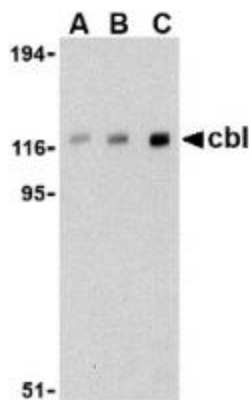
[View online »](#)

Synonyms: C-CBL; CBL2; FRA11B; NSLL; RNF55

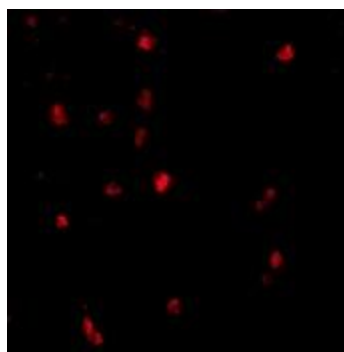
Protein Families: Druggable Genome, Transcription Factors

Protein Pathways: Chronic myeloid leukemia, Endocytosis, ErbB signaling pathway, Insulin signaling pathway, Jak-STAT signaling pathway, Pathways in cancer, T cell receptor signaling pathway, Ubiquitin mediated proteolysis

Product images:



Western blot analysis of cbl in Daudi cell lysate with cbl antibody at (A) 0.5, (B) 1, and (C) 2 ug/mL.



Immunofluorescence of cbl in human lymph node tissue with cbl antibody at 20 ug/mL.