

Product datasheet for **TA306361**

SLUG (SNAI2) Rabbit Polyclonal Antibody

Product data:

Product Type:	Primary Antibodies
Applications:	IF, WB
Recommended Dilution:	WB: 0.5 - 2 ug/mL, IF: 20 ug/mL
Reactivity:	Human, Mouse
Host:	Rabbit
Isotype:	IgG
Clonality:	Polyclonal
Immunogen:	Slug antibody was raised against a 13 amino acid synthetic peptide from near the center of human Slug. The immunogen is located within amino acids 90 - 140 of Slug.
Formulation:	PBS containing 0.02% sodium azide.
Purification:	Affinity chromatography purified via peptide column
Conjugation:	Unconjugated
Storage:	Store at -20°C as received.
Stability:	Stable for 12 months from date of receipt.
Gene Name:	snail family transcriptional repressor 2
Database Link:	NP_003059 Entrez Gene 20583 Mouse Entrez Gene 6591 Human O43623

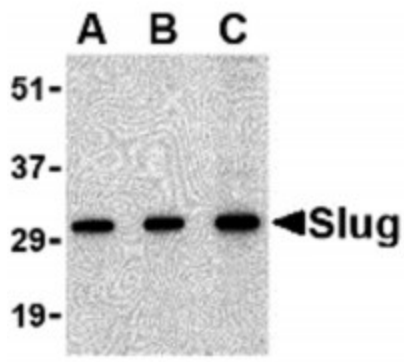
Background: Slug, a member of the Snail family of C2H2-type zinc finger transcription factors, was initially identified to be involved in epithelial-mesenchymal transitions as well as the formation of the neural tube during vertebrate embryogenesis. Like Snail, Slug transcription can be induced by growth factors such as FGF, BMP, and TGF-beta. Once expressed, Slug will bind E-box regions of promoters and repress transcription of genes such as E-cadherin and Claudin-. More recently, its expression in breast, esophageal, and colorectal carcinomas has been correlated with poor prognosis for survival. Furthermore, Slug can protect hemapoietic progenitor cells from radiation-induced apoptosis by repressing the p53-mediated transcription of Puma, a BH3-only antagonist of the anti-apoptotic members of the Bcl-2 family. Slug antibody has no cross-reactivity to Snail protein.



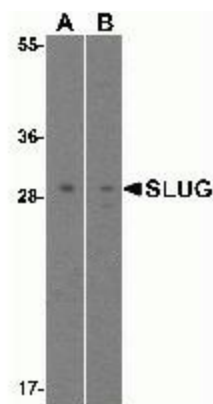
[View online »](#)

Synonyms: SLUG; SLUGH1; SNAIL2; WS2D
Protein Families: Druggable Genome, Transcription Factors
Protein Pathways: Adherens junction

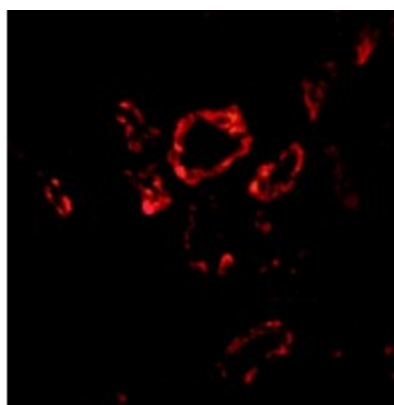
Product images:



Western blot analysis of Slug in 293 cell lysate with Slug antibody at in (A) 0.5, (B) 1 and (C) 2ug/ml.



Western blot analysis of SLUG expression in (A) human and (B) mouse kidney tissue lysate with SLUG antibody at 0.5ug/ml.



Immunofluorescence of Slug in human kidney tissue with Slug antibody at 20ug/ml.