

Product datasheet for **TA306354**

IRF7 Rabbit Polyclonal Antibody

Product data:

Product Type:	Primary Antibodies
Applications:	IHC, WB
Recommended Dilution:	WB: 0.5 - 1 ug/mL, ICC: 5 ug/mL
Reactivity:	Human
Host:	Rabbit
Isotype:	IgG
Clonality:	Polyclonal
Immunogen:	IRF7 antibody was raised against a peptide corresponding to 14 amino acids near the center of human IRF7.
Formulation:	PBS containing 0.02% sodium azide.
Concentration:	1ug/ul
Purification:	Affinity chromatography purified via peptide column
Conjugation:	Unconjugated
Storage:	Store at -20°C as received.
Stability:	Stable for 12 months from date of receipt.
Gene Name:	interferon regulatory factor 7
Database Link:	NP_001563 Entrez Gene 3665 Human Q92985



[View online »](#)

Background:

Interferons (IFNs) are involved in a multitude of immune interactions during viral infections and play a major role in both the induction and regulation of innate and adaptive antiviral mechanisms. During infection, host-virus interactions signal downstream molecules such as transcription factors such as IFN regulatory factor-3 (IRF3) which can act to stimulate transcription of IFN-alpha/beta genes. IRF7 has been shown to play a role in the transcriptional activation of virus-inducible cellular genes, including interferon beta chain genes. IRF7 play a major role in the innate immune pathway, interacting with the Toll-like receptor (TLR) adaptor proteins MyD88 and Tirp/TRAM and functioning as an intermediate TLR4 and TLR9 signaling (3,4). There are at least four differentially spliced isoforms of IRF7, although their function has not been clearly established.

Synonyms:

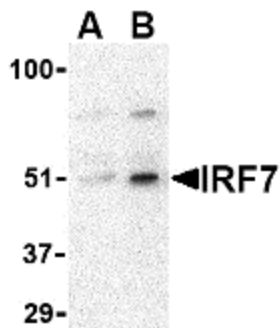
IMD39; IRF-7H; IRF7A; IRF7B; IRF7C; IRF7H

Protein Families:

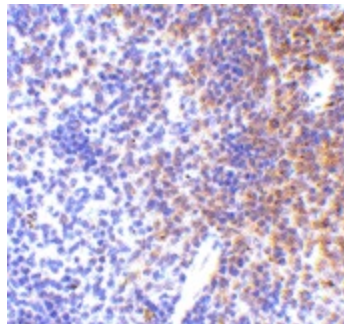
Transcription Factors

Protein Pathways:

Cytosolic DNA-sensing pathway, RIG-I-like receptor signaling pathway, Toll-like receptor signaling pathway

Product images:


Western blot analysis of IRF7 in 293 whole cell lysate with IRF7 antibody at (A) 0.5 and (B) 1 ug/ml.



Immunohistochemistry of IRF7 in mouse spleen tissue with IRF7 antibody at 5 ug/ml.