

## Product datasheet for **TA306353**

### IRF7 Rabbit Polyclonal Antibody

#### Product data:

Product Type:	Primary Antibodies
Applications:	IF, IHC, WB
Recommended Dilution:	WB: 0.5 - 1 ug/mL, ICC: 5 ug/mL, IF: 20 ug/mL
Reactivity:	Human, Mouse, Rat
Host:	Rabbit
Isotype:	IgG
Clonality:	Polyclonal
Immunogen:	IRF7 antibody was raised against a peptide corresponding to 14 amino acids near the carboxy terminus of human IRF7. The immunogen is located within amino acids 420 - 470 of IRF7.
Formulation:	PBS containing 0.02% sodium azide.
Concentration:	1ug/ul
Purification:	Affinity chromatography purified via peptide column
Conjugation:	Unconjugated
Storage:	Store at -20°C as received.
Stability:	Stable for 12 months from date of receipt.
Gene Name:	interferon regulatory factor 7
Database Link:	<a href="#">NP_001563</a> <a href="#">Entrez Gene 54123 Mouse</a> <a href="#">Entrez Gene 293624 Rat</a> <a href="#">Entrez Gene 3665 Human</a> <a href="#">Q92985</a>



[View online »](#)

**Background:**

Interferons (IFNs) are involved in a multitude of immune interactions during viral infections and play a major role in both the induction and regulation of innate and adaptive antiviral mechanisms. During infection, host-virus interactions signal downstream molecules such as transcription factors such as IFN regulatory factor-3 (IRF3) which can act to stimulate transcription of IFN- $\alpha$ /b genes. IRF7 has been shown to play a role in the transcriptional activation of virus-inducible cellular genes, including interferon beta chain genes. IRF7 play a major role in the innate immune pathway, interacting with the Toll-like receptor (TLR) adaptor proteins MyD88 and Tirp/TRAM and functioning as an intermediate TLR4 and TLR9 signaling. There are at least four differentially spliced isoforms of IRF7, although their function has not been clearly established.

**Synonyms:**

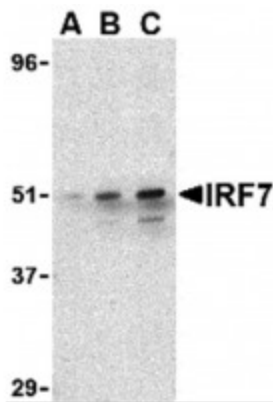
IMD39; IRF-7H; IRF7A; IRF7B; IRF7C; IRF7H

**Protein Families:**

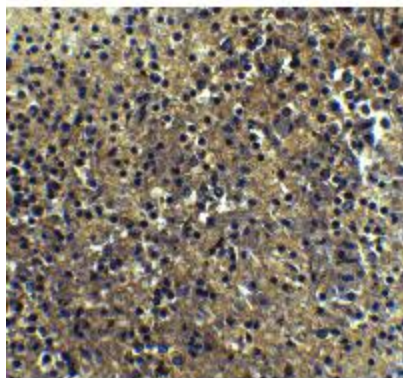
Transcription Factors

**Protein Pathways:**

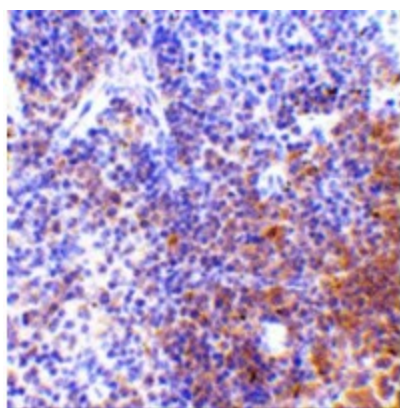
Cytosolic DNA-sensing pathway, RIG-I-like receptor signaling pathway, Toll-like receptor signaling pathway

**Product images:**


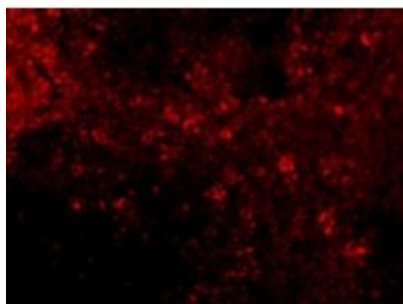
Western blot analysis of IRF7 in 293 whole cell lysate with IRF7 antibody at (A) 0.5, (B) 1, and (C) 2 $\mu$ g/ml.



Immunohistochemistry of IRF7 in human spleen tissue with IRF7 Antibody at 5 $\mu$ g/ml.



Immunohistochemistry of IRF7 in mouse spleen tissue with IRF7 antibody at 5ug/ml.



Immunofluorescence of IRF7 in Mouse Spleen cells with IRF7 antibody at 20ug/ml.