

Product datasheet for **TA306351**

SHP2 (PTPN11) Rabbit Polyclonal Antibody

Product data:

Product Type:	Primary Antibodies
Applications:	IF, WB
Recommended Dilution:	WB: 0.5 - 1 ug/mL, IF: 20 ug/mL
Reactivity:	Human, Mouse, Rat
Host:	Rabbit
Isotype:	IgG
Clonality:	Polyclonal
Immunogen:	SHP2 antibody was raised against a 14 amino acid peptide from near the amino terminus of human SHP2.
Formulation:	PBS containing 0.02% sodium azide.
Concentration:	1ug/ul
Purification:	Affinity chromatography purified via peptide column
Conjugation:	Unconjugated
Storage:	Store at -20°C as received.
Stability:	Stable for 12 months from date of receipt.
Gene Name:	protein tyrosine phosphatase, non-receptor type 11
Database Link:	NP_002825 Entrez Gene 19247 Mouse Entrez Gene 25622 Rat Entrez Gene 5781 Human Q06124



[View online »](#)

Background:

Src homology-2 domain containing protein (SHP2) is a member of the protein tyrosine phosphatase (PTP) family, a protein family that contains signaling molecules that regulate a variety of cellular processes including cell growth, differentiation, mitotic cycle, and oncogenic transformation. SHP2 contains two tandem Src homology-2 (SH2) domains, which function as phosphotyrosine binding domains either directly or through scaffolding intermediates such as the insulin-receptor substrate 1 (IRS-1). These SH2 domains mediate the interaction of SHP2 with its substrates, allowing SHP2 to dephosphorylate proteins that inhibit signaling kinases such as ERK1 and AKT. SHP2 is widely expressed in most tissues and plays a regulatory role in various cell signaling events that are important for a diversity of cell functions, such as mitogenic activation, metabolic control, transcription regulation, and cell migration. Recent experiments have shown SHP2 plays a significant role in hepatoprotection and liver regeneration.

Synonyms:

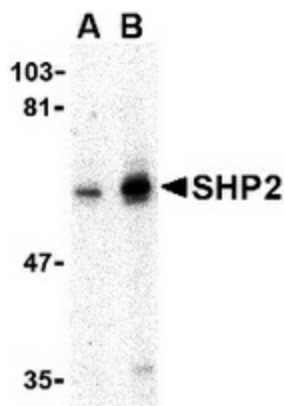
BPTP3; CFC; JMML; METCD5; NS1; PTP-1D; PTP2C; SH-PTP2; SH-PTP3; SHP2

Protein Families:

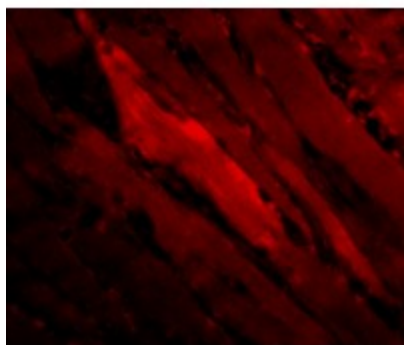
Druggable Genome, Phosphatase

Protein Pathways:

Adipocytokine signaling pathway, Chronic myeloid leukemia, Epithelial cell signaling in Helicobacter pylori infection, Jak-STAT signaling pathway, Leukocyte transendothelial migration, Natural killer cell mediated cytotoxicity, Neurotrophin signaling pathway, Renal cell carcinoma

Product images:

Western blot analysis of SHP2 in mouse skeletal muscle tissue lysate with SHP2 antibody at (A) 0.5 and (B) 1 ug/ml.



Immunofluorescence of SHP2 in Human Skeletal Muscle cells with SHP2 antibody at 20 ug/mL.